

# Anti-Phospho-STAT3 (Tyr705) Rabbit antibody



Catalog Number: 167430

## Product name

Anti-Phospho-STAT3 (Tyr705) Rabbit antibody

ICC/IF: 1/50-1/000

IP: 1/30

## Validations

## Specificity

Human, Mouse, Rat

## Antibody description

Phospho-STAT3 (Tyr705) Rabbit polyclonal antibody

## Preparation

Antigen: A synthesized peptide derived from human STAT3

## Formulation

Rabbit IgG in phosphate buffered saline , pH 7.4, 150mM NaCl, 0.02% sodium azide and 50% glycerol.

## Storage

Store at 4°C short term. Store at -20°C long term. Avoid freeze / thaw cycle.

## Clonality

Polyclonal

## Ig Type

Rabbit IgG

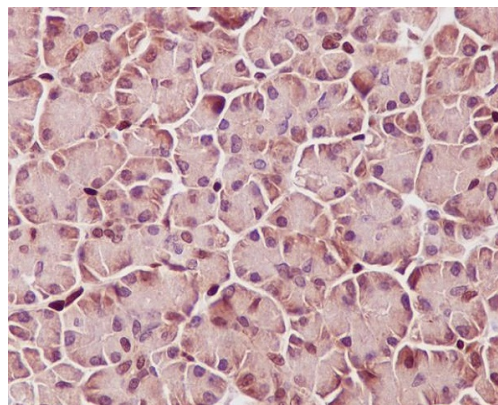
## Applications

WB, IHC-P, ICC/IF, IP

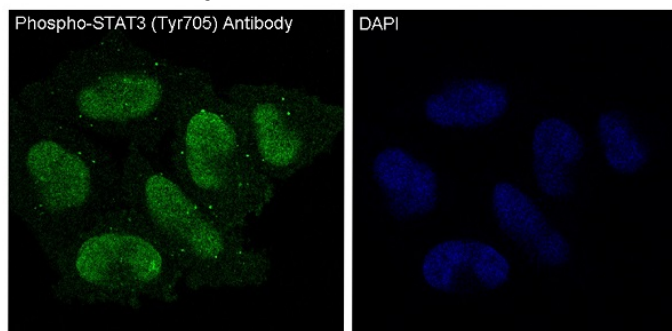
## Dilutions

WB: 1/5000-1/10000

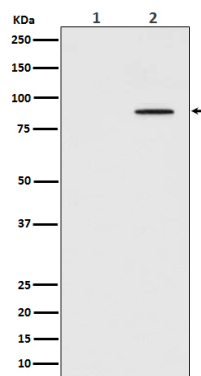
IHC: 1/50-1/100



Immunohistochemical analysis of paraffin-embedded human pancreas, using Phospho-STAT3 (Y705) Antibody.



Immunofluorescent analysis of HeLa cells treated with IFN-alpha, using Phospho-STAT3 (Y705) Antibody.



Antibody.

Western blot analysis of Phospho-STAT3 (Tyr705) expression in (1) HeLa cell lysate; (2) HeLa cell lysate treated with IFN-a.