

MMP28 Polyclonal Antibody



Catalog Number: 164430

Product name

MMP28 Polyclonal Antibody

Specificity

Human

Antibody description

Polyclonal antibody to MMP28

Preparation

Antigen: A synthetic Peptide of human MMP28

Formulation

PBS with 0.02% sodium azide, pH7.3.

Storage

Store at 4°C. Avoid freeze / thaw cycles.

Clonality

Polyclonal

Ig Type

Rabbit IgG

Applications

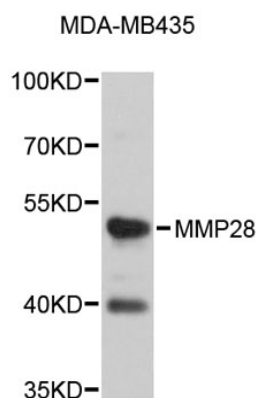
WB, IHC

Dilutions

WB 1:500 - 1:1000

IHC 1:20 - 1:50

Validations



Western blot - MMP28 Polyclonal Antibody

Western blot analysis of extracts of MDA-MB-435 cells, using MMP28 antibody. Secondary antibody: HRP Goat Anti-Rabbit IgG (H+L) at 1:10000 dilution. Lysates/proteins: 25ug per lane. Blocking buffer: 3% nonfat dry milk in TBST.