

# TAS2R38 Polyclonal Antibody



Catalog Number: 162430

## Product name

TAS2R38 Polyclonal Antibody

## Specificity

Rat

## Antibody description

Polyclonal antibody to TAS2R38

## Preparation

Antigen: A synthetic peptide corresponding to a sequence within amino acids 150-250 of human TAS2R38 (NP\_789787.4).

## Formulation

PBS with 0.02% sodium azide, 50% glycerol, pH7.3.

## Storage

Store at -20°C. Avoid freeze / thaw cycles.

## Clonality

Polyclonal

## Ig Type

Rabbit IgG

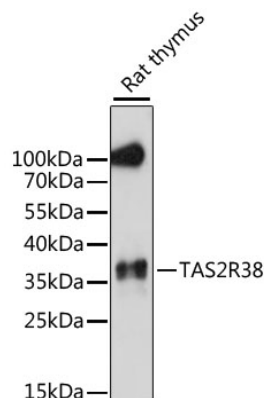
## Applications

WB

## Dilutions

WB 1:500 - 1:2000

## Validations



Western blot - TAS2R38 Polyclonal Antibody

Western blot analysis of extracts of rat thymus, using TAS2R38 antibody at 1:1000 dilution. Secondary antibody: HRP Goat Anti-Rabbit IgG (H+L) at 1:10000 dilution. Lysates/proteins: 25ug per lane. Blocking buffer: 3% nonfat dry milk in TBST. Detection: ECL Enhanced Kit. Exposure time: 90.