

HLA-F antibody

Catalog Number: 111430

Product name

HLA-F antibody

WB: 1:200-1:2000

IHC: 1:20-1:200

Specificity

Human; other species not tested.

Antibody description

HLA-F Rabbit Polyclonal antibody. Positive IHC detected in human skin cancer tissue, human placenta tissue, human spleen tissue. Positive WB detected in human placenta tissue, A431 cells, human spleen tissue, Raji cells. Observed molecular weight by Western-blot: 45 kDa

Preparation

This antibody was obtained by immunization of HLA-F recombinant protein (Accession Number: NM_018950). Purification method: Antigen affinity purified.

Formulation

PBS with 0.02% sodium azide and 50% glycerol pH 7.3.

Storage

Store at -20°C. DO NOT ALIQUOT

Clonality

Polyclonal

Ig Type

Rabbit IgG

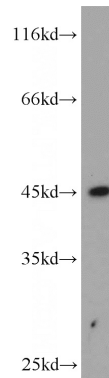
Applications

ELISA, WB, IHC

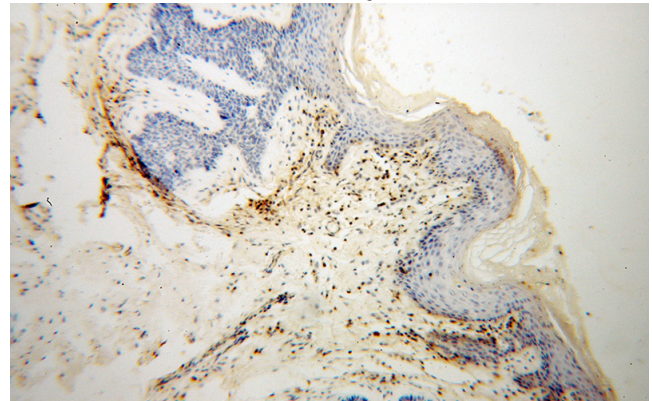
Dilutions

Recommended Dilution:

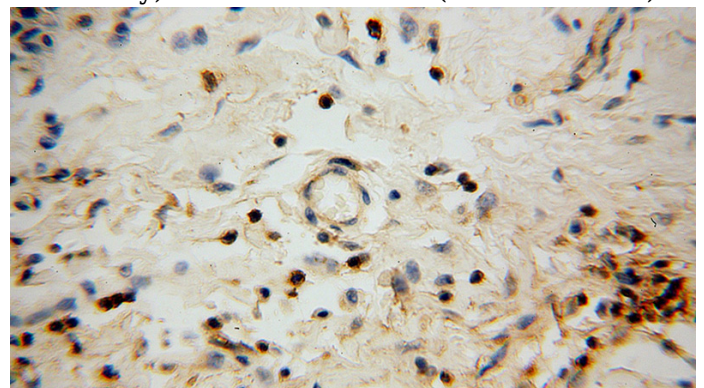
Validations



human placenta tissue were subjected to SDS PAGE followed by western blot with Catalog No:111430(HLA-F antibody) at dilution of 1:500



Immunohistochemical of paraffin-embedded human skin cancer using Catalog No:111430(HLA-F antibody) at dilution of 1:100 (under 10x lens)



Immunohistochemical of paraffin-embedded human skin cancer using Catalog No:111430(HLA-F antibody) at dilution of 1:100 (under 40x lens)