

Anti-TREM1 antibody



Catalog Number: 141430

Product name

Anti-TREM1 antibody

Immunogen

[Human TREM-1/TREM1 \(His & Fc Tag\) recombinant protein](#)

Specificity

Human TREM-1 / TREM1

Antibody description

Mouse Monoclonal to Human TREM1

Preparation

This antibody was produced from a hybridoma resulting from the fusion of a mouse myeloma with B cells obtained from a mouse immunized with purified, recombinant Human TREM-1 / TREM1 and conjugated with PE under optimum conditions, the unreacted PE was removed.

Formulation

Aqueous solution containing 0.5% BSA and 0.09% sodium azide

Storage

This antibody is stable for 12 months from date of receipt when stored at 2°C-8°C. Protected from

prolonged exposure to light. Do not freeze ! Sodium azide is toxic to cells and should be disposed of properly. Flush with large volumes of water during disposal.

Clonality

Monoclonal

Ig Type

Mouse IgG1

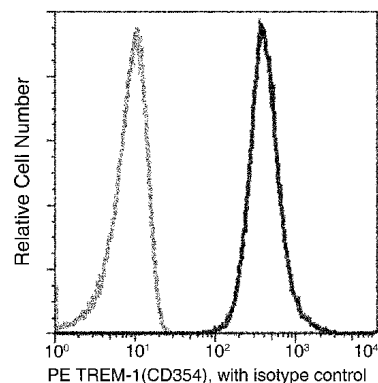
Applications

FCM

Dilutions

FCM

Validations



Human TREM-1/TREM1 Flow Cytometry (FC) 15076