

# PMS2 antibody

Catalog Number: 114030

---

## Product name

PMS2 antibody

## Specificity

Human, Mouse, Rat; other species not tested.

## Antibody description

PMS2 Rabbit Polyclonal antibody. Positive WB detected in A431 cells, HeLa cells, HT-1080 cells, MCF7 cells, PC-3 cells, Raji cells. Observed molecular weight by Western-blot: 117 kDa, 100 kDa

## Preparation

This antibody was obtained by immunization of PMS2 recombinant protein (Accession Number: NM\_000535). Purification method: Antigen affinity purified.

## Formulation

PBS with 0.02% sodium azide and 50% glycerol pH 7.3.

## Storage

Store at -20°C. DO NOT ALIQUOT

## Clonality

Polyclonal

## Ig Type

Rabbit IgG

## Applications

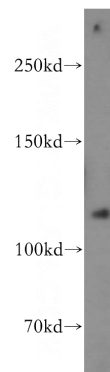
ELISA, WB

## Dilutions

Recommended Dilution:

WB: 1:200-1:2000

## Validations



A431 cells were subjected to SDS PAGE followed by western blot with Catalog No:114030(PMS2 antibody) at dilution of 1:500