

# NCAPD3 antibody



Catalog Number: 113030

## Product name

NCAPD3 antibody

IP: 1:200-1:2000

IF: 1:50-1:500

## Specificity

Human; other species not tested.

## Antibody description

NCAPD3 Rabbit Polyclonal antibody. Positive IF detected in HepG2 cells. Positive IP detected in HeLa cells. Positive WB detected in HepG2 cells, HeLa cells. Observed molecular weight by Western-blot: 165 kDa

## Preparation

This antibody was obtained by immunization of NCAPD3 recombinant protein (Accession Number: BC011408). Purification method: Antigen affinity purified.

## Formulation

PBS with 0.02% sodium azide and 50% glycerol pH 7.3.

## Storage

Store at -20°C. DO NOT ALIQUOT

## Clonality

Polyclonal

## Ig Type

Rabbit IgG

## Applications

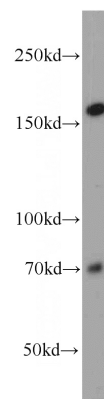
ELISA, WB, IP, IF

## Dilutions

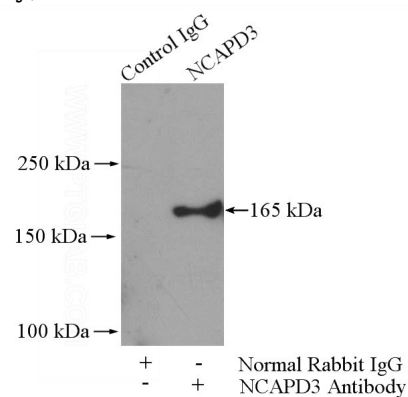
Recommended Dilution:

WB: 1:200-1:2000

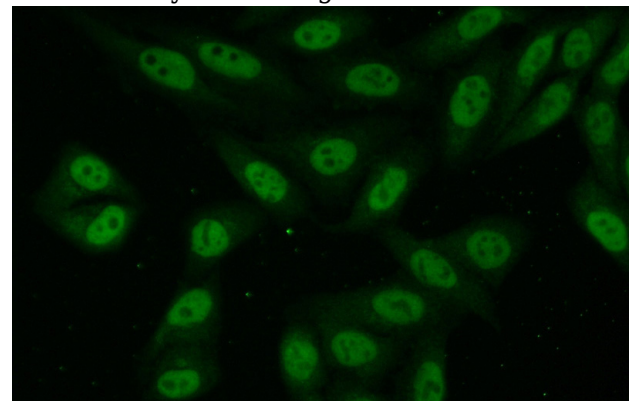
## Validations



HepG2 cells were subjected to SDS PAGE followed by western blot with Catalog No:113030(NCAPD3 antibody) at dilution of 1:800



IP Result of anti-NCAPD3 (IP:Catalog No:113030, 4ug; Detection:Catalog No:113030 1:500) with HeLa cells lysate 600ug.



Immunofluorescent analysis of (10% Formaldehyde) fixed HepG2 cells using Catalog

# NCAPD3 antibody



Catalog Number: 113030

---

No:113030(NCAPD3 Antibody) at dilution of 1:50

and Alexa Fluor 488-conjugated AffiniPure Goat  
Anti-Rabbit IgG(H+L)