

Rhesus IL12A / IL-12A (Fc Tag) recombinant protein



Catalog Number: 501030

General Information

Gene Name Synonym

Cytotoxic lymphocyte maturation factor 35 kDa subunit; IL-12 subunit p35

Protein Construction

A DNA sequence encoding the rhesus IL12A (NP_001038199.1) (Met1-Ser219) was expressed with the Fc region of human IgG1 at the C-terminus.

Organism

Rhesus

Expression Host

Human Cells

QC Testing

Purity

> 90 % as determined by SDS-PAGE

Endotoxin

< 1.0 EU per μg of the protein as determined by the LAL method

Stability

Samples are stable for up to twelve months from date of receipt at -70°C

Predicted N terminal

Arg 23

Molecular Mass

The recombinant rhesus IL12A comprises 438 amino acids and has a calculated molecular mass of 49.6 KDa.

Formulation

Lyophilized from sterile PBS, pH 7.4.

1. 5 % trehalose and mannitol are added as protectants before lyophilization.
2. Please contact us for any concerns or special requirements.

Usage Guide

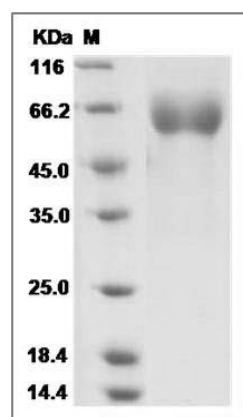
Storage

Store it under sterile conditions at -20°C to -80°C . It is recommended that the protein be aliquoted for optimal storage. Avoid repeated freeze-thaw cycles.

Reconstitution

Adding sterile water, prepare a stock solution of 0.25 mg/ml. Concentration is measured by UV-Vis.

SDS-PAGE



Cynomolgus / Rhesus IL12A / NKSF1 Protein (Fc Tag) SDS-PAGE