

# Mouse Slamf6/Ly108 (His tag) recombinant protein



Catalog Number: 519720

## General Information

### Gene Name Synonym

SLAM family member 6, Lymphocyte antigen 108, Ly108, SLAMF6, RP11-528G1.1, FLJ50657, KALI, KAL1b, MGC104953, NTB-A, NTBA, SF2000, Ly108, Slamf6, KAL1, KAL1b, NTB-A, NTBA, SF2000

### Protein Construction

A DNA sequence encoding the Mouse Slamf6/Ly108 Glu31-Asn239 is expressed with a 6His tag at the N-terminus.

### Organism

Mouse

### Expression Host

Human Cells

## QC Testing

### Purity

>95% as determined by SDS-PAGE.

### Endotoxin

<1.0 EU per  $\mu\text{g}$  protein as determined by the LAL method.

### Stability

Store for up to 12 months at  $-20^{\circ}\text{C}$  to  $-80^{\circ}\text{C}$  as lyophilized powder. Aliquots of reconstituted samples are stable at  $< -20^{\circ}\text{C}$  for 3 months.

## Formulation

Lyophilized from a  $0.2\ \mu\text{m}$  filtered solution of PBS, pH7.4.

## Usage Guide

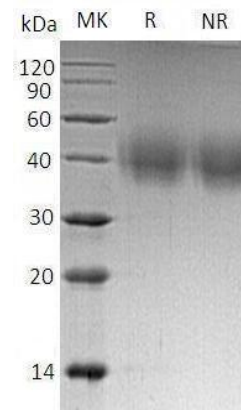
### Storage

Lyophilized protein should be stored at  $< -20^{\circ}\text{C}$ , though stable at room temperature for 3 weeks. Reconstituted protein solution can be stored at  $4-7^{\circ}\text{C}$  for 2-7 days.

### Reconstitution

Always centrifuge tubes before opening. Do not mix by vortex or pipetting. It is not recommended to reconstitute to a concentration less than  $100\ \mu\text{g}/\text{ml}$ . Dissolve the lyophilized protein in ddH<sub>2</sub>O. Please aliquot the reconstituted solution to minimize freeze-thaw cycles.

## SDS-PAGE



Mouse Slamf6/Ly108 (His tag) recombinant protein