

# Cirhin antibody



Catalog Number: 109320

## Product name

Cirhin antibody

## Specificity

Human, Mouse, Rat; other species not tested.

## Antibody description

Cirhin Rabbit Polyclonal antibody. Positive WB detected in SH-SY5Y cells, HepG2 cells, Neuro-2a cells. Observed molecular weight by Western-blot: 70-77 kDa

## Preparation

This antibody was obtained by immunization of Cirhin recombinant protein (Accession Number: NM\_032830). Purification method: Antigen affinity purified.

## Formulation

PBS with 0.1% sodium azide and 50% glycerol pH 7.3.

## Storage

Store at -20°C. DO NOT ALIQUOT

## Clonality

Polyclonal

## Ig Type

Rabbit IgG

## Applications

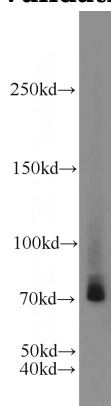
ELISA, WB

## Dilutions

Recommended Dilution:

WB: 1:500-1:5000

## Validations



SH-SY5Y cells were subjected to SDS PAGE followed by western blot with Catalog No:109320(CIRH1A antibody) at dilution of 1:1000