

# NAPRT1 antibody

Catalog Number: 107320

## Product name

NAPRT1 antibody

IHC: 1:20-1:200

IF: 1:50-1:500

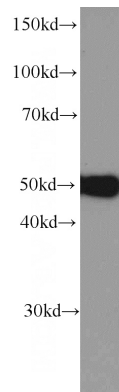
## Specificity

Human, Mouse; other species not tested.

## Antibody description

NAPRT1 Mouse Monoclonal antibody. Positive IF detected in HeLa cells. Positive IHC detected in human small intestine tissue. Positive WB detected in HeLa cells, HEK-293 cells, HepG2 cells. Observed molecular weight by Western-blot: 51 kDa

## Validations



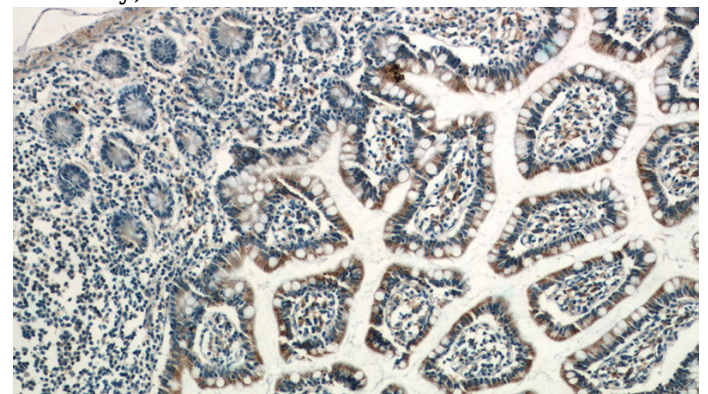
## Preparation

This antibody was obtained by immunization of NAPRT1 recombinant protein (Accession Number: NM\_001363146). Purification method: Protein A purified.

HeLa cells were subjected to SDS PAGE followed by western blot with Catalog No:107320(NAPRT1 Antibody) at dilution of 1:1500

## Formulation

PBS with 0.02% sodium azide and 50% glycerol pH 7.3.



## Storage

Store at -20°C. DO NOT ALIQUOT

## Clonality

Monoclonal

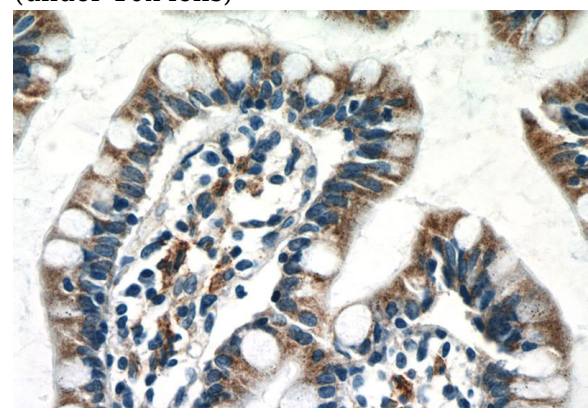
Immunohistochemistry of paraffin-embedded human small intestine tissue slide using Catalog No:107320(NAPRT1 Antibody) at dilution of 1:50 (under 10x lens)

## Ig Type

Mouse IgG2a

## Applications

ELISA, WB, IHC, IF



## Dilutions

Recommended Dilution:

WB: 1:500-1:5000

Immunohistochemistry of paraffin-embedded

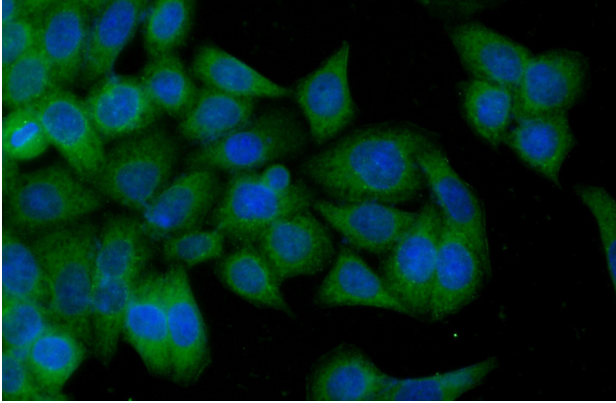
# NAPRT1 antibody



Catalog Number: 107320

---

human small intestine tissue slide using Catalog No:107320(NAPRT1 Antibody) at dilution of 1:50 (under 40x lens)



Immunofluorescent analysis of (-20oc Ethanol) fixed HeLa cells using Catalog No:107320(NAPRT1 Antibody) at dilution of 1:100 and Alexa Fluor 488-conjugated AffiniPure Goat Anti-Mouse IgG(H+L)