

# Anti-RPS3 antibody



Catalog Number: 105320

## Product name

Anti-RPS3 antibody

## Specificity

Human 40S ribosomal protein S3/RPS3

## Antibody description

Rabbit polyclonal to RPS3

## Preparation

Produced in rabbits immunized with a synthetic peptide corresponding to the C-terminus of the Human 40S ribosomal protein S3/RPS3, and purified by antigen affinity chromatography.

## Formulation

0.2 µm filtered solution in PBS

## Storage

This antibody can be stored at 2°C-8°C for one month without detectable loss of activity. Antibody products are stable for twelve months from date of receipt when stored at -20°C to -80°C.

Preservative-Free.

Sodium azide is recommended to avoid contamination (final concentration 0.05%-0.1%). It is toxic to cells and should be disposed of properly. Avoid repeated freeze-thaw cycles.

## Clonality

Polyclonal

## Ig Type

Rabbit IgG

## Applications

WB, IP

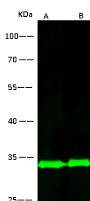
## Dilutions

WB: 1-10 µg/ml

IHC-P: 0.1-2 µg/mL

IP: 0.5-2 uL/mg of lysate

## Validations



Items	Lanes	A	B
Sample (whole cell lysate)		HepG2	Jurkat
Sample Volume (µg/lane)		30	30
Gel	13% SDS-PAGE reducing gel		
Recommended Concentration	1-10 µg/ml		
Secondary Antibody	Dylight 800-labeled Antibody to Rabbit IgG (H+L), at 1:5000 dilution.		
Developed using Odyssey imaging system.			
Explanation	Predicted band size : 27 kDa Observed band size : 32 kDa		

40S ribosomal protein S3 / RPS3 Antibody, Rabbit PAb, Antigen Affinity Purified, Western blot