

Anti-ACTA2 antibody



Catalog Number: 104320

Product name

Anti-ACTA2 antibody

Specificity

Human Alpha-Smooth Muscle Actin (ACTA2)

Antibody description

Rabbit polyclonal to ACTA2

Preparation

Produced in rabbits immunized with purified, a synthetic peptide corresponding to the N-terminus of the Human Alpha-Smooth Muscle Actin (ACTA2), and purified by antigen affinity chromatography.

Formulation

0.2 µm filtered solution in PBS with 5% trehalose

Storage

This antibody can be stored at 2°C-8°C for one month without detectable loss of activity. Antibody products are stable for twelve months from date of receipt when stored at -20°C to -80°C.

Preservative-Free.

Sodium azide is recommended to avoid contamination (final concentration 0.05%-0.1%). It is toxic to cells and should be disposed of properly. Avoid repeated freeze-thaw cycles.

Clonality

Polyclonal

Ig Type

Rabbit IgG

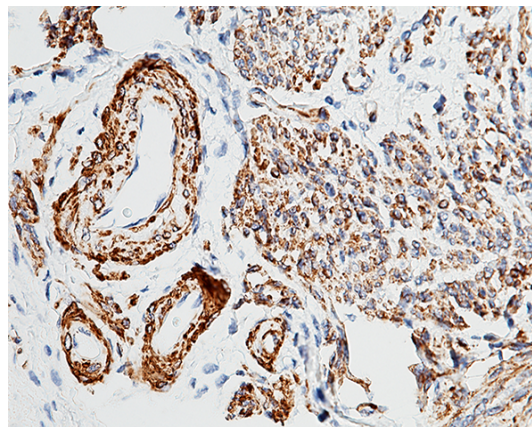
Applications

IHC-P

Dilutions

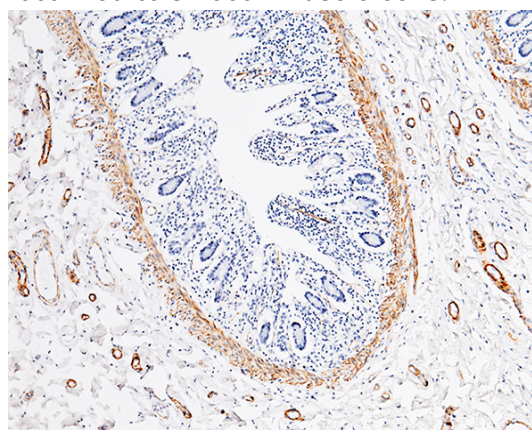
IHC-P: 0.1-1 µg/mL

Validations



Alpha-Smooth Muscle Actin (ACTA2) Antibody, Rabbit PAb, Antigen Affinity Purified, Immunohistochemistry

Immunochemical staining of Human Alpha-Smooth Muscle Actin (ACTA2) in human uterus with rabbit polyclonal antibody (0.5 µg/mL, formalin-fixed paraffin embedded sections). Positive staining was localized to smooth muscle cells.



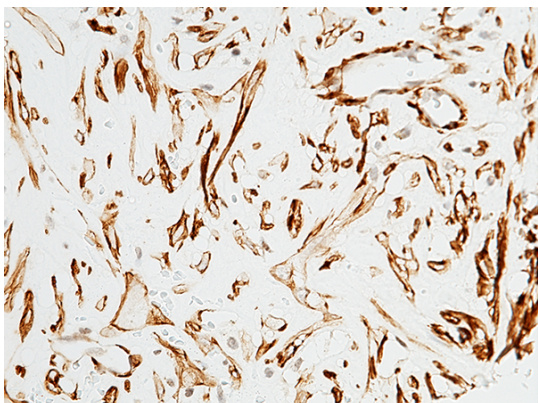
Alpha-Smooth Muscle Actin (ACTA2) Antibody, Rabbit PAb, Antigen Affinity Purified, Immunohistochemistry

Immunochemical staining of human Actin in human small intestine with rabbit polyclonal antibody (0.5 µg/mL, formalin-fixed paraffin embedded sections). Positive staining was localized to smooth muscle cells.

Anti-ACTA2 antibody



Catalog Number: 104320



Alpha-Smooth Muscle Actin (ACTA2) Antibody,
Rabbit PAb, Antigen Affinity Purified,
Immunohistochemistry

Immunochemical staining of Human Alpha-Smooth
Muscle Actin (ACTA2) in human epididymis with
rabbit polyclonal antibody (0.5 $\mu\text{g}/\text{mL}$, formalin-
fixed paraffin embedded sections). Positive
staining was localized to smooth muscle cells.