

# Mouse Pm20d1 (His tag) recombinant protein



Catalog Number: 518620

## General Information

### Gene Name Synonym

Probable carboxypeptidase PM20D1, Peptidase M20 domain-containing protein 1, Pm20d1

### Protein Construction

A DNA sequence encoding the Mouse Pm20d1 Ser25-Leu503 is expressed with a 6His tag at the C-terminus.

### Organism

Mouse

### Expression Host

Human Cells

## QC Testing

### Purity

>95% as determined by SDS-PAGE.

### Endotoxin

<1.0 EU per µg protein as determined by the LAL

method.

### Stability

Store for up to 6 months at -20°C

### Formulation

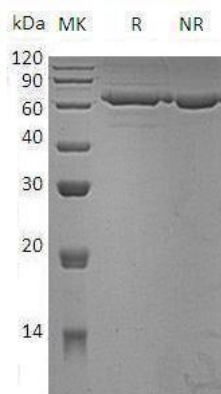
Supplied as a 0.2 µm filtered solution of PBS, pH 7.4.

## Usage Guide

### Storage

Store at <-20°C, minimize freeze-thaw cycles.

### SDS-PAGE



Mouse Pm20d1 (His tag) recombinant protein