

# Anti-Renin antibody



Catalog Number: 102620

## Product name

Anti-Renin antibody

## Immunogen

[Human Renin \(His Tag\) recombinant protein](#)

## Specificity

Human Renin / REN / AngiotensinogenaseHas 20 % cross activity in ELISA with Mouse REN1 / Renin-1

## Antibody description

Rabbit monoclonal to Renin

## Preparation

This antibody was obtained from a rabbit immunized with purified, recombinant Human Renin (rh Renin; NP\_000528.1; Met 1-Arg 406).

## Formulation

0.2 µm filtered solution in PBS with 5% trehalose

## Storage

This antibody can be stored at 2°C-8°C for one month without detectable loss of activity. Antibody products are stable for twelve months from date of receipt when stored at -20°C to -80°C.

Preservative-Free.

Sodium azide is recommended to avoid contamination (final concentration 0.05%-0.1%). It is toxic to cells and should be disposed of properly. Avoid repeated freeze-thaw cycles.

## Clonality

Monoclonal

## Ig Type

Rabbit IgG

## Applications

ELISA, WB, IHC-P, IF, ICC/IF

## Dilutions

WB: 10-20 µg/mL

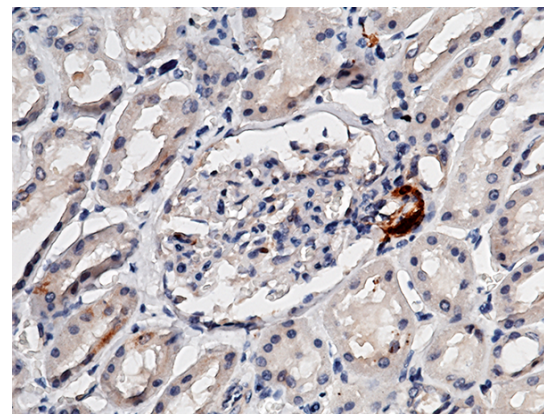
ELISA: 0.1-0.2 µg/mL

This antibody can be used at 0.1-0.2 µg/mL with the appropriate secondary reagents to detect Human RENIN. The detection limit for Human RENIN is approximately 0.00245 ng/well.

IHC-P: 1-10 µg/mL

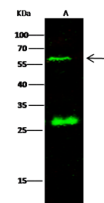
ICC/IF: 10-25 µg/mL

## Validations



Renin / REN / Angiotensinogenase Antibody, Rabbit MAb, Immunohistochemistry

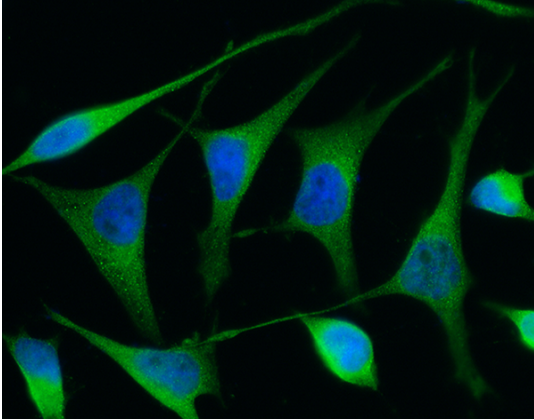
Immunochemical staining of human RENIN in human kidney with rabbit monoclonal antibody (5 µg/mL, formalin-fixed paraffin embedded



Items	Lanes	A
Sample (whole cell lysate)		K562
Sample Volume (µg/lane)		30
Gel		13% SDS-PAGE reducing gel
Recommended Concentration		10-20 µg/ml
Secondary Antibody		Dylight 800-labeled Antibody To Rabbit IgG (H+L), at 1:5000 dilution.

sections).

Renin / REN / Angiotensinogenase Antibody,  
Rabbit MAb, Western blot



Renin / REN / Angiotensinogenase Antibody,  
Rabbit MAb, Immunofluorescence

Immunofluorescence staining of Human Renin in HeLa cells. Cells were fixed with 4% PFA, permeabilized with 0.3% Triton X-100 in PBS, blocked with 10% serum, and incubated with rabbit anti-Human Renin monoclonal antibody (15  $\mu\text{g/ml}$ ) at 37°C 1 hour. Then cells were stained with the Alexa Fluor® 488-conjugated goat Anti-rabbit IgG secondary antibody (green) and counterstained with DAPI (blue). Positive staining was localized to cytoplasm.