

# IFIT3 antibody

Catalog Number: 111620

## Product name

IFIT3 antibody

IP: 1:200-1:2000

IF: 1:50-1:500

## Specificity

Human; other species not tested.

## Antibody description

IFIT3 Rabbit Polyclonal antibody. Positive IF detected in HepG2 cells. Positive WB detected in HepG2 cells. Positive IP detected in HepG2 cells. Observed molecular weight by Western-blot: 60 kDa

## Preparation

This antibody was obtained by immunization of IFIT3 recombinant protein (Accession Number: NM\_001031683). Purification method: Antigen affinity purified.

## Formulation

PBS with 0.02% sodium azide and 50% glycerol pH 7.3.

## Storage

Store at -20°C. DO NOT ALIQUOT

## Clonality

Polyclonal

## Ig Type

Rabbit IgG

## Applications

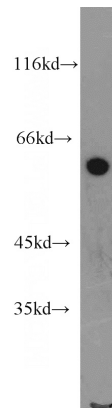
ELISA, WB, IP, IF

## Dilutions

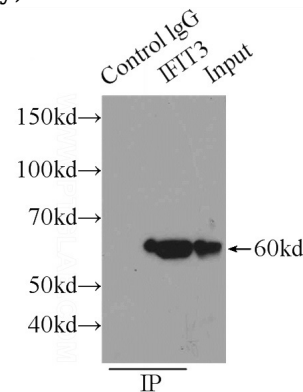
Recommended Dilution:

WB: 1:200-1:2000

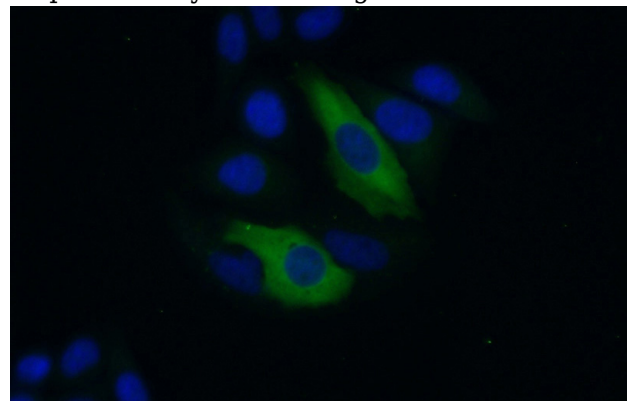
## Validations



HepG2 cells were subjected to SDS PAGE followed by western blot with Catalog No:111620(IFIT3 antibody) at dilution of 1:800



IP Result of anti-IFIT3 (IP:Catalog No:111620, 3ug; Detection:Catalog No:111620 1:500) with HepG2 cells lysate 1720ug.



Immunofluorescent analysis of (10% Formaldehyde) fixed HepG2 cells using Catalog

# IFIT3 antibody



Catalog Number: 111620

---

No:111620(IFIT3 Antibody) at dilution of 1:50 and Alexa Fluor 488-conjugated AffiniPure Goat Anti-Rabbit IgG(H+L)