

FERMT1 antibody



Catalog Number: 110620

Product name

FERMT1 antibody

Recommended Dilution:

WB: 1:200-1:1000

Specificity

Human, Mouse; other species not tested.

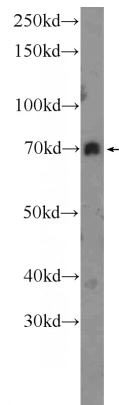
IHC: 1:20-1:200

IF: 1:10-1:100

Antibody description

FERMT1 Rabbit Polyclonal antibody. Positive WB detected in mouse kidney tissue, COLO 320 cells, HEK-293 cells. Positive IHC detected in human pancreas tissue, human colon cancer tissue, human colon tissue, human pancreas cancer tissue. Positive IF detected in HEK-293 cells. Observed molecular weight by Western-blot: 70-77 kDa

Validations



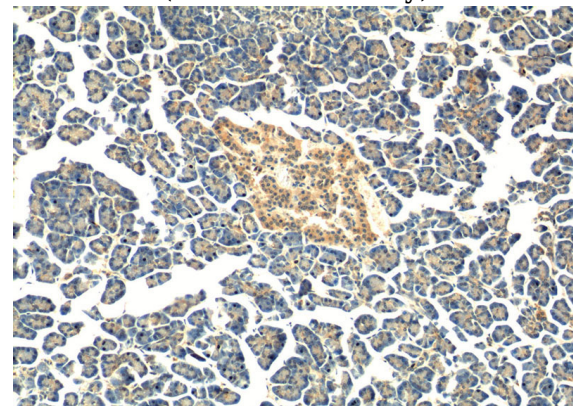
Preparation

This antibody was obtained by immunization of FERMT1 recombinant protein (Accession Number: BC035882). Purification method: Antigen affinity purified.

mouse kidney tissue were subjected to SDS PAGE followed by western blot with Catalog No:110620(FERMT1 Antibody) at dilution of 1:300

Formulation

PBS with 0.02% sodium azide and 50% glycerol pH 7.3.



Storage

Store at -20°C. DO NOT ALIQUOT

Clonality

Polyclonal

Ig Type

Rabbit IgG

Applications

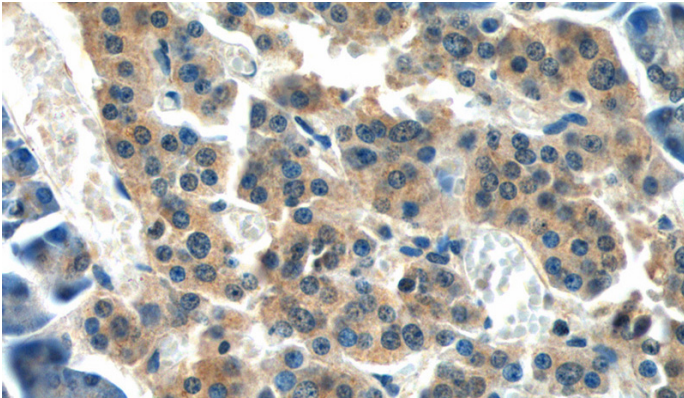
ELISA, WB, IHC, IF

Immunohistochemistry of paraffin-embedded human pancreas tissue slide using Catalog No:110620(FERMT1 Antibody) at dilution of 1:50 (under 10x lens)

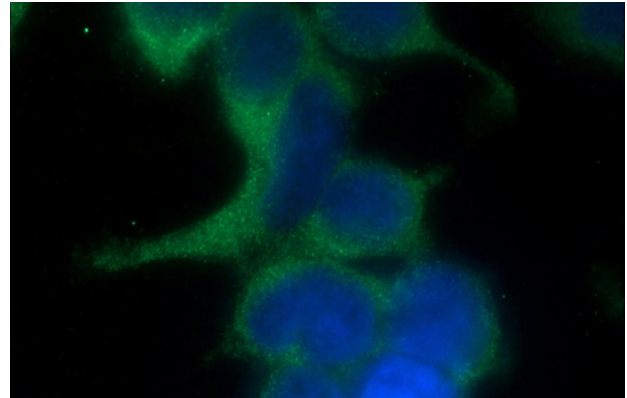
Dilutions

FERMT1 antibody

Catalog Number: 110620



Immunohistochemistry of paraffin-embedded human pancreas tissue slide using Catalog No:110620(FERMT1 Antibody) at dilution of 1:50 (under 40x lens)



Immunofluorescent analysis of HEK-293 cells using Catalog No:110620(FERMT1 Antibody) at dilution of 1:25 and Alexa Fluor 488-conjugated AffiniPure Goat Anti-Rabbit IgG(H+L)