

Anti-POLR2E Rabbit antibody



Catalog Number: 167220

Product name

Anti-POLR2E Rabbit antibody

Specificity

Human, Mouse, Rat

Antibody description

POLR2E Rabbit polyclonal antibody

Preparation

Antigen: A synthetic peptide of human POLR2E

Formulation

Supplied in 50nM Tris-Glycine(pH 7.4), 0.15M NaCl, 40%Glycerol, 0.01% sodium azide and 0.05% BSA.

Storage

Store at -20°C. Stable for 12 months from date of receipt.

Clonality

Polyclonal

Ig Type

Rabbit IgG

Applications

WB, IHC-P, FC

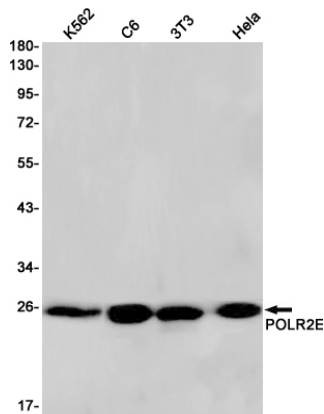
Dilutions

WB: 1/2000

IHC: 1/20

FC: 1/20

Validations



Western blot detection of POLR2E in K562,C6,3T3,HeLa cell lysates using POLR2E Rabbit pAb(1:1000 diluted).Predicted band size:25kDa.Observed band size:25kDa.