

EGR1 antibody

Catalog Number: 110220

Product name

EGR1 antibody

IP: 1:200-1:2000

IHC: 1:20-1:200

Specificity

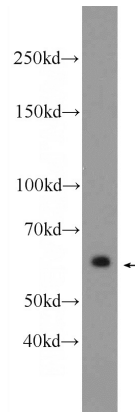
Human, Mouse; other species not tested.

IF: 1:10-1:100

Antibody description

EGR1 Rabbit Polyclonal antibody. Positive IF detected in HeLa cells. Positive IHC detected in human ovary tumor tissue, human cervical cancer tissue, human placenta tissue. Positive IP detected in mouse brain tissue. Positive WB detected in mouse brain tissue. Observed molecular weight by Western-blot: 62 kDa

Validations



Preparation

This antibody was obtained by immunization of Peptide (Accession Number: NM_001964). Purification method: Antigen affinity purified.

mouse brain tissue were subjected to SDS PAGE followed by western blot with Catalog No:110220(EGR1 Antibody) at dilution of 1:300

Formulation

0.1M NaHCO₃, 0.1M glycine, 0.02% sodium azide and 50% glycerol pH 7.3.

Storage

Store at -20°C. DO NOT ALIQUOT

Clonality

Polyclonal

Ig Type

Rabbit IgG

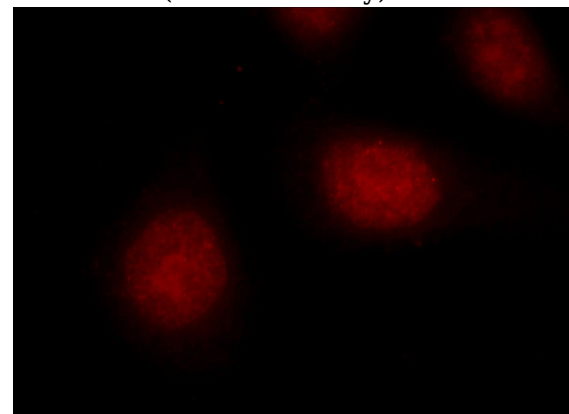
Applications

ELISA, WB, IF, IHC, IP

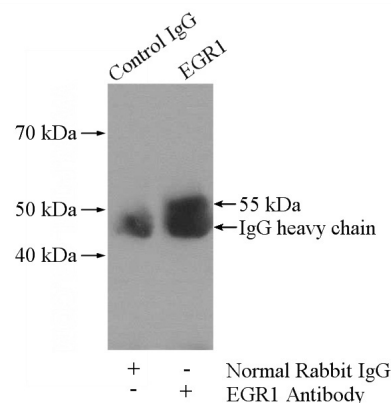
Dilutions

Recommended Dilution:

WB: 1:200-1:1000



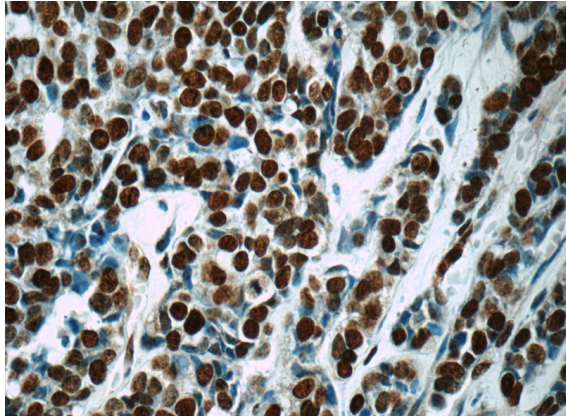
Immunofluorescent analysis of HeLa cells using Catalog No:110220(EGR1 Antibody) at dilution of 1:25 and Rhodamine-Goat anti-Rabbit IgG



EGR1 antibody

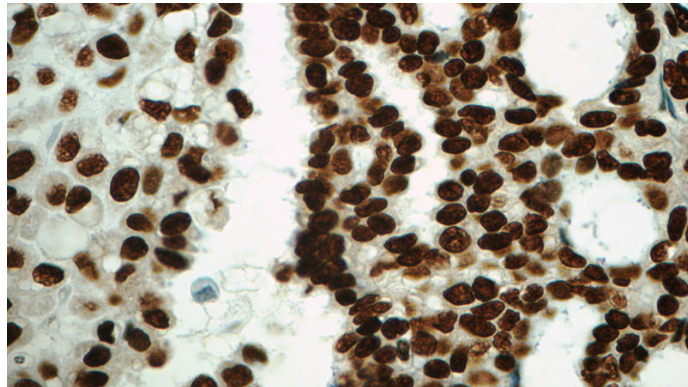
Catalog Number: 110220

IP Result of anti-EGR1 (IP:Catalog No:110220, 4ug; Detection:Catalog No:110220 1:500) with mouse brain tissue lysate 2640ug.



Immunohistochemistry of paraffin-embedded human cervical cancer tissue slide using Catalog

No:110220(EGR1 Antibody) at dilution of 1:50 (under 40x lens)



Immunohistochemistry of paraffin-embedded human ovary tumor tissue slide using Catalog No:110220(EGR1 Antibody) at dilution of 1:50 (under 40x lens)