

# HPCAL1 Polyclonal Antibody



Catalog Number: 160220

## Product name

HPCAL1 Polyclonal Antibody

## Specificity

Human, Mouse, Rat

## Antibody description

Polyclonal antibody to HPCAL1

## Preparation

Antigen: Recombinant fusion protein containing a sequence corresponding to amino acids 1-193 of human HPCAL1 (NP\_002140.2).

## Formulation

PBS with 0.02% sodium azide, 50% glycerol, pH7.3.

## Storage

Store at -20°C. Avoid freeze / thaw cycles.

## Clonality

Polyclonal

## Ig Type

Rabbit IgG

## Applications

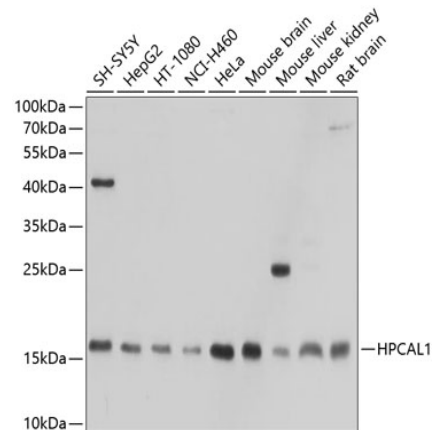
WB, IP

## Dilutions

WB 1:500 - 1:2000

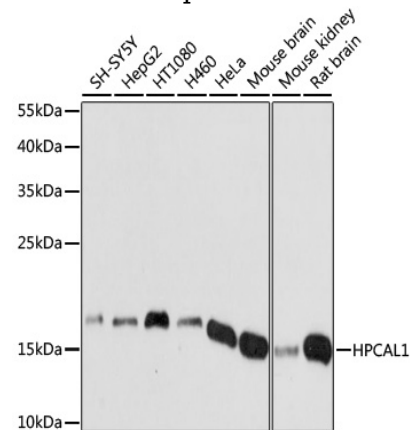
IP 1:20 - 1:100

## Validations



Western blot - HPCAL1 Polyclonal Antibody

Western blot analysis of extracts of various cell lines, using HPCAL1 antibody at 1:1000 dilution. Secondary antibody: HRP Goat Anti-Rabbit IgG (H+L) at 1:10000 dilution. Lysates/proteins: 25ug per lane. Blocking buffer: 3% nonfat dry milk in TBST. Detection: ECL Basic Kit. Exposure time: 30s.



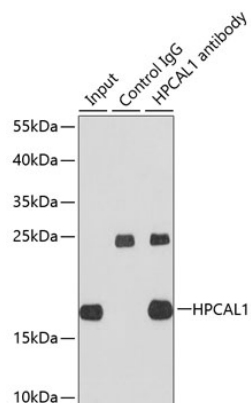
Western blot - HPCAL1 Polyclonal Antibody

Western blot analysis of extracts of various cells, using HPCAL1 antibody at 1:1000 dilution ratio through one-step method. Secondary antibody: HRP Goat Anti-Rabbit IgG (H+L) at 1:10000 dilution. Lysates/proteins: 25ug per lane. Blocking buffer: 3% nonfat dry milk in TBST. Detection: ECL

# HPCAL1 Polyclonal Antibody



Catalog Number: 160220



## Immunoprecipitation - HPCAL1 Polyclonal Antibody

Immunoprecipitation analysis of extracts of HepG2 cells using HPCAL1 antibody . Western blot was performed from the immunoprecipitate using HPCAL1 antibody at a dilution of 1:1000.

Basic Kit .Exposure time: 3min.