

# CaMKII gamma antibody



Catalog Number: 108920

## Product name

CaMKII gamma antibody

WB: 1:1000-1:10000

IP: 1:500-1:5000

## Specificity

Human, Mouse, Rat; other species not tested.

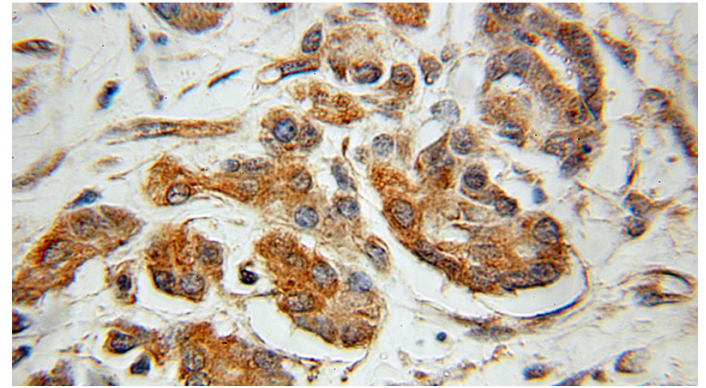
IHC: 1:20-1:200

IF: 1:10-1:100

## Antibody description

CaMKII gamma Rabbit Polyclonal antibody. Positive WB detected in SMMC-7721 cells, human brain tissue. Positive IP detected in mouse heart tissue. Positive IHC detected in human pancreas cancer tissue. Positive IF detected in HepG2 cells. Observed molecular weight by Western-blot: 59 kDa

## Validations



Immunohistochemical of paraffin-embedded human pancreas cancer using Catalog No:108920(CAMK2G antibody) at dilution of 1:100 (under 10x lens)

## Preparation

This antibody was obtained by immunization of CaMKII gamma recombinant protein (Accession Number: NM\_172169). Purification method: Antigen affinity purified.

## Formulation

PBS with 0.1% sodium azide and 50% glycerol pH 7.3.

## Storage

Store at -20°C. DO NOT ALIQUOT

## Clonality

Polyclonal

## Ig Type

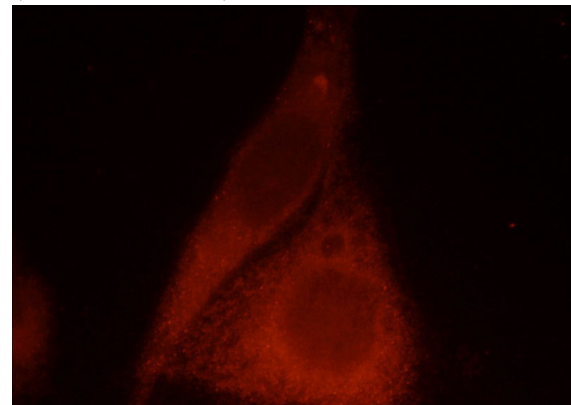
Rabbit IgG

## Applications

ELISA, IHC, IF, WB, IP

## Dilutions

Recommended Dilution:

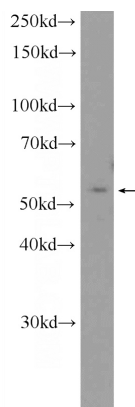


Immunofluorescent analysis of HepG2 cells, using CAMK2G antibody Catalog No:108920 at 1:25 dilution and Rhodamine-labeled goat anti-rabbit

# CaMKII gamma antibody

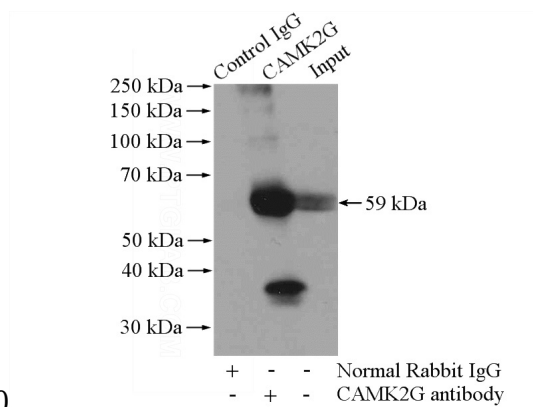


Catalog Number: 108920



IgG (red).

SMMC-7721 cells were subjected to SDS PAGE followed by western blot with Catalog No:108920(CAMK2G Antibody) at dilution of



1:2000

IP Result of anti-CAMK2G (IP:Catalog No:108920, 4ug; Detection:Catalog No:108920 1:1000) with mouse heart tissue lysate 3200ug.