

## General Information

### Gene Name Synonym

Hsp10; 10 kDa chaperonin; Chaperonin 10; CPN10; Early-pregnancy factor; EPF

### Protein Construction

A DNA sequence encoding the human HSPE1 (NP\_002148.1) (Met1-Asp102) was expressed with a polyhistidine tag at the N-terminus.

### Organism

Human

### Expression Host

E. coli

## QC Testing

### Purity

> 90 % as determined by SDS-PAGE.

### Endotoxin

Please contact us for more information.

### Stability

Samples are stable for up to twelve months from date of receipt at -70°C

### Predicted N terminal

Met

### Molecular Mass

The recombinant human HSPE1 consists of 120 amino acids and predicts a molecular mass of 13.2 kDa.

### Formulation

Lyophilized from sterile PBS, pH 7.4.

1. Normally 5 % - 8 % trehalose, mannitol and 0.01% Tween80 are added as protectants before lyophilization. Specific concentrations are included in the hardcopy of COA.

2. Please contact us for any concerns or special requirements.

## Usage Guide

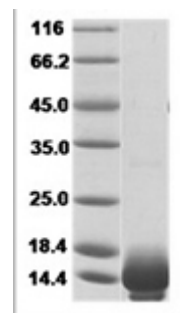
### Storage

Store it under sterile conditions at -20°C to -80°C. It is recommended that the protein be aliquoted for optimal storage. Avoid repeated freeze-thaw cycles.

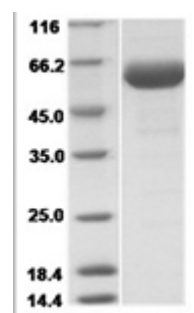
### Reconstitution

A hardcopy of COA with reconstitution instruction is sent along with the products. Please refer to it for detailed information.

## SDS-PAGE



Human HSPE1 Protein 15519



Human HSPE1 Protein (His Tag)