

RRAS antibody

Catalog Number: 114920

Product name

RRAS antibody

IP: 1:200-1:1000

IHC: 1:20-1:200

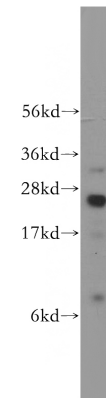
Specificity

Human, Mouse, Rat; other species not tested.

Validations

Antibody description

RRAS Rabbit Polyclonal antibody. Positive WB detected in human spleen tissue. Positive IP detected in mouse spleen tissue. Positive IHC detected in human prostate cancer tissue. Observed molecular weight by Western-blot: 25 kDa



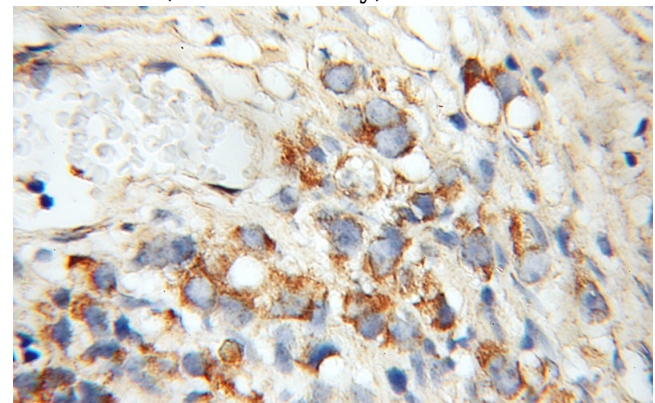
Preparation

This antibody was obtained by immunization of RRAS recombinant protein (Accession Number: NM_006270). Purification method: Antigen affinity purified.

human spleen tissue were subjected to SDS PAGE followed by western blot with Catalog No:114920(RRAS antibody) at dilution of 1:500

Formulation

PBS with 0.1% sodium azide and 50% glycerol pH 7.3.



Storage

Store at -20°C. DO NOT ALIQUOT

Clonality

Polyclonal

Immunohistochemical of paraffin-embedded human prostate cancer using Catalog No:114920(RRAS antibody) at dilution of 1:50 (under 10x lens)

Ig Type

Rabbit IgG

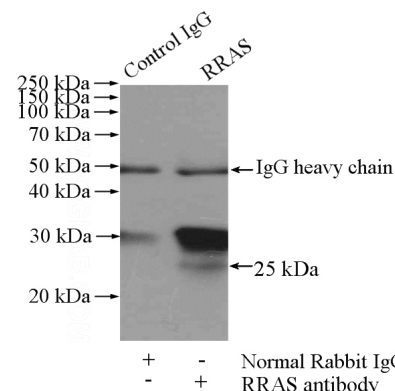
Applications

ELISA, WB, IHC, IP

Dilutions

Recommended Dilution:

WB: 1:500-1:5000



IP Result of anti-RRAS (IP:Catalog No:114920,

RRAS antibody



Catalog Number: 114920

4ug; Detection:Catalog No:114920 1:300) with mouse spleen tissue lysate 4000ug.