

KBTBD2 antibody

Catalog Number: 111920

Product name

KBTBD2 antibody

Specificity

Human, Mouse, Rat; other species not tested.

Antibody description

KBTBD2 Rabbit Polyclonal antibody. Positive WB detected in COLO 320 cells. Positive IHC detected in human colon cancer tissue.

Preparation

This antibody was obtained by immunization of KBTBD2 recombinant protein (Accession Number: NM_015483). Purification method: Antigen affinity purified.

Formulation

PBS with 0.02% sodium azide and 50% glycerol pH 7.3.

Storage

Store at -20°C. DO NOT ALIQUOT

Clonality

Polyclonal

Ig Type

Rabbit IgG

Applications

ELISA, IHC, WB

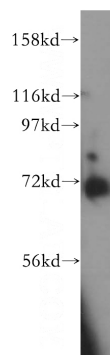
Dilutions

Recommended Dilution:

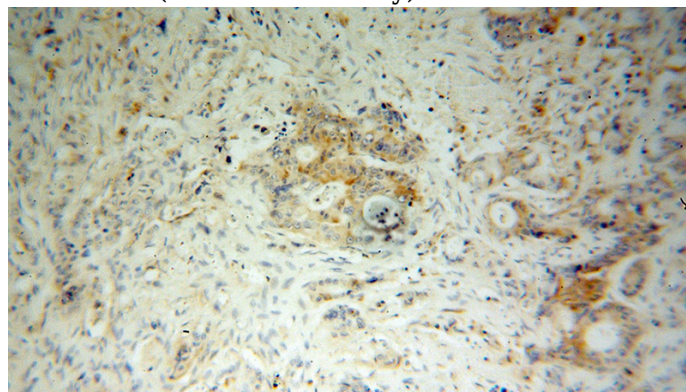
WB: 1:200-1:2000

IHC: 1:20-1:200

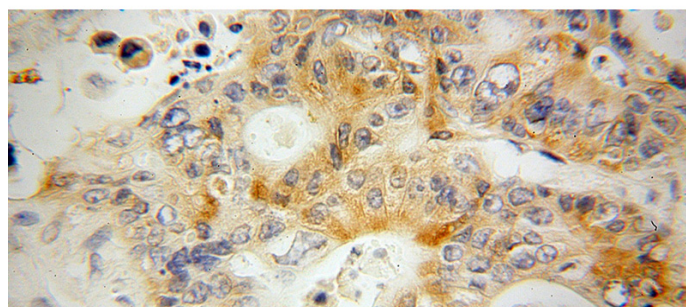
Validations



COLO 320 cells were subjected to SDS PAGE followed by western blot with Catalog No:111920(KBTBD2 antibody) at dilution of 1:500



Immunohistochemical of paraffin-embedded human colon cancer using Catalog No:111920(KBTBD2 antibody) at dilution of 1:50 (under 10x lens)



Immunohistochemical of paraffin-embedded human colon cancer using Catalog No:111920(KBTBD2 antibody) at dilution of 1:50 (under 40x lens)