

Anti-SHH antibody

Catalog Number: 176520

Product name

Anti-SHH antibody

Specificity

Human

Antibody description

Rabbit monoclonal antibody to SHH

Preparation

This antigen of this antibody was recombinant protein

Formulation

Liquid, 1*TBS (pH7.4), 0.05% BSA, 40% Glycerol.
Preservative: 0.05% Sodium Azide.

Storage

Store at +4°C after thawing. Aliquot store at -20°C or -80°C. Avoid repeated freeze / thaw cycles.

Clonality

Monoclonal

Ig Type

Rabbit IgG

Applications

WB, ICC/IF, IHC-P, FC

Dilutions

WB: 1:1,000-1:2,000

ICC/IF: 1:50-1:200

IHC-P: 1:200-1:500

FC: 1:50-1:100

Validations

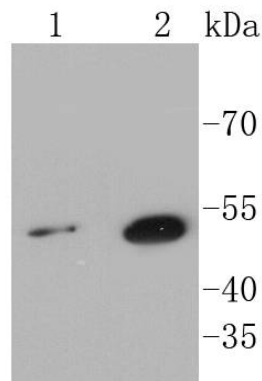


Fig1:: Western blot analysis of Sonic Hedgehog Protein on different lysates using anti-Sonic Hedgehog Protein antibody at 1/1,000 dilution.; Positive control.; Lane 1: HeLa; Lane 2: HepG2

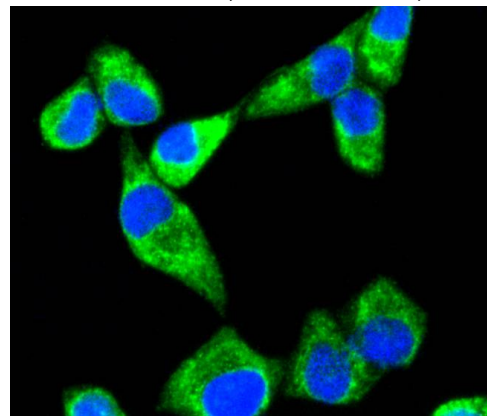


Fig2:: ICC staining Sonic Hedgehog Protein in HeLa cells (green). The nuclear counter stain is DAPI (blue). Cells were fixed in paraformaldehyde, permeabilised with 0.25% Triton X100/PBS.

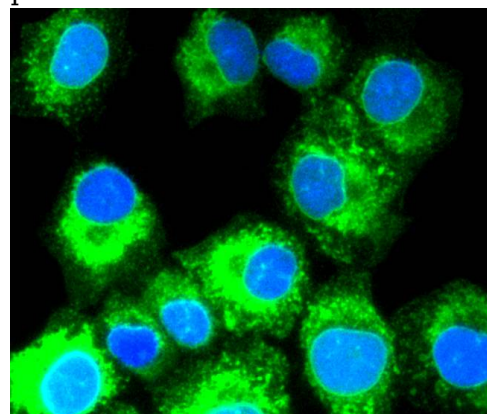


Fig3:: ICC staining Sonic Hedgehog Protein in A549 cells (green). The nuclear counter stain is DAPI (blue). Cells were fixed in paraformaldehyde, permeabilised with 0.25% Triton X100/PBS.

Anti-SHH antibody

Catalog Number: 176520

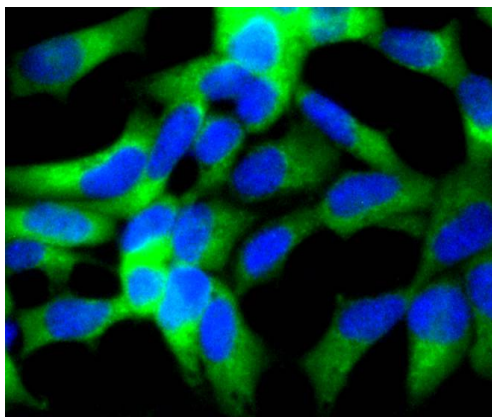


Fig4:; ICC staining Sonic Hedgehog Protein in 293 cells (green). The nuclear counter stain is DAPI (blue). Cells were fixed in paraformaldehyde, permeabilised with 0.25% Triton X100/PBS.

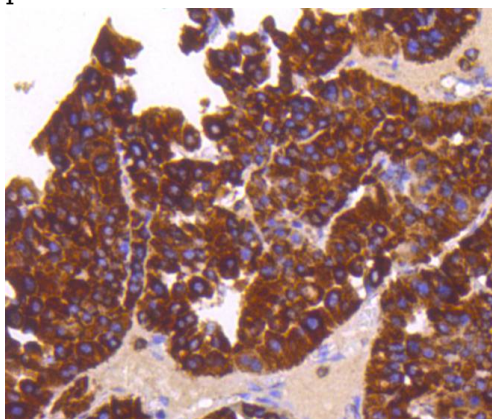


Fig5:; Immunohistochemical analysis of paraffin-embedded human liver cancer tissue using anti-Sonic Hedgehog Protein antibody. Counter stained with hematoxylin.

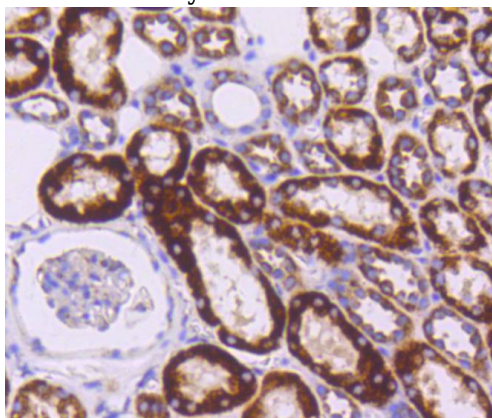
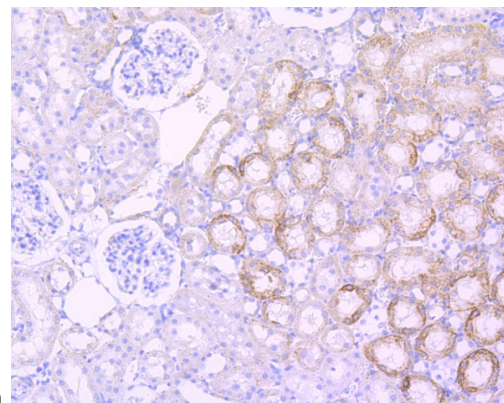
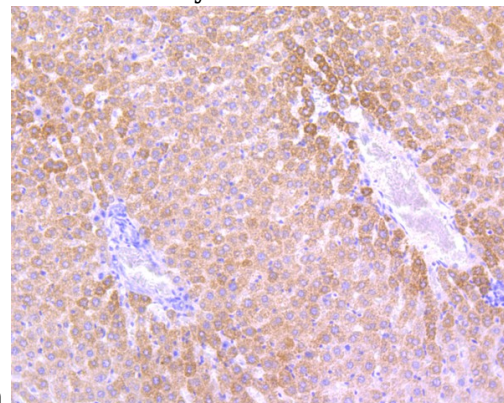


Fig6:; Immunohistochemical analysis of paraffin-embedded human kidney tissue using anti-Sonic Hedgehog Protein antibody. Counter stained with



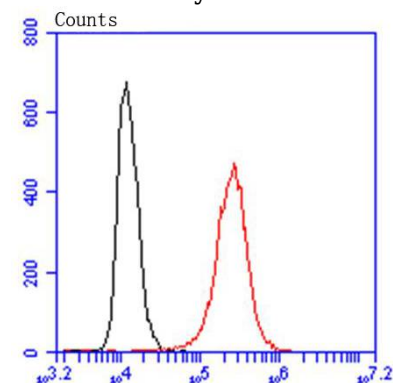
hematoxylin.

Fig7:; Immunohistochemical analysis of paraffin-embedded rat kidney tissue using anti-Sonic Hedgehog Protein antibody. Counter stained with



hematoxylin.

Fig8:; Immunohistochemical analysis of paraffin-embedded rat liver tissue using anti-Sonic Hedgehog Protein antibody. Counter stained with



hematoxylin. Sonic Hedgehog Protein-Alexa Fluor 488

Fig9:; Flow cytometric analysis of Hela cells with Sonic Hedgehog Protein antibody at 1/50 dilution (red) compared with an unlabelled control (cells without incubation with primary antibody; black). Alexa Fluor 488-conjugated goat anti rabbit IgG was used as the secondary antibody.