

# Anti-Phospho-Paxillin (Tyr118) Rabbit antibody



Catalog Number: 167120

## Product name

Anti-Phospho-Paxillin (Tyr118) Rabbit antibody

## Specificity

Human, Mouse, Rat

## Antibody description

Phospho-Paxillin (Tyr118) Rabbit polyclonal antibody

## Preparation

Antigen: Peptide sequence around phosphorylation site of tyrosine 118 (H-V-Y(p)-S-F) derived from Human Paxillin.

## Formulation

Supplied at 1.0mg/mL in phosphate buffered saline (without Mg<sup>2+</sup> and Ca<sup>2+</sup>), pH 7.4, 150mM NaCl, 0.02% sodium azide and 50% glycerol.

## Storage

Store at 4°C short term. Store at -20°C long term. Avoid freeze / thaw cycle.

## Clonality

Polyclonal

## Ig Type

Rabbit IgG

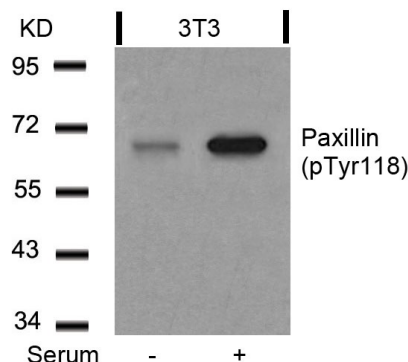
## Applications

WB, IHC-P

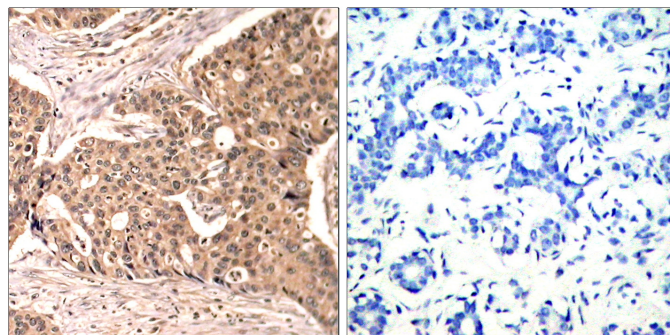
## Dilutions

WB:1/500-1/1000 IHC:1/50-1/100

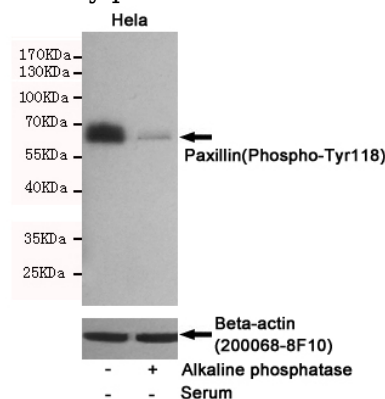
## Validations



Western blot analysis of extracts from 3T3 cells untreated or treated with serum using Paxillin (Phospho-Tyr118) Antibody .



Immunohistochemical analysis of paraffin-embedded human breast carcinoma tissue using Paxillin (Phospho-Tyr118) Antibody (left) or the same antibody preincubated with blocking peptide (right).



Western blot detection of Paxillin(Phospho-Tyr118) in serum-starved A549 cells untreated or treated with Alkaline phosphatase using Paxillin(Phospho-Tyr118) Rabbit pAb (dilution 1:1000, upper) or u03b2-Actin Mouse mAb (200068-8F10, lower). Predicted band size: 68kDa. Observed band size: 68kDa.