

# SEPT6 antibody

Catalog Number: 115120

## Product name

SEPT6 antibody

IP: 1:200-1:2000

IHC: 1:20-1:200

## Specificity

Human, Mouse, Rat; other species not tested.

## Antibody description

SEPT6 Rabbit Polyclonal antibody. Positive WB detected in Jurkat cells, K-562 cells, rat brain tissue. Positive IP detected in rat brain tissue. Positive IHC detected in human cervical cancer tissue. Observed molecular weight by Western-blot: 50 kDa

## Preparation

This antibody was obtained by immunization of SEPT6 recombinant protein (Accession Number: NM\_015129). Purification method: Antigen affinity purified.

## Formulation

PBS with 0.1% sodium azide and 50% glycerol pH 7.3.

## Storage

Store at -20°C. DO NOT ALIQUOT

## Clonality

Polyclonal

## Ig Type

Rabbit IgG

## Applications

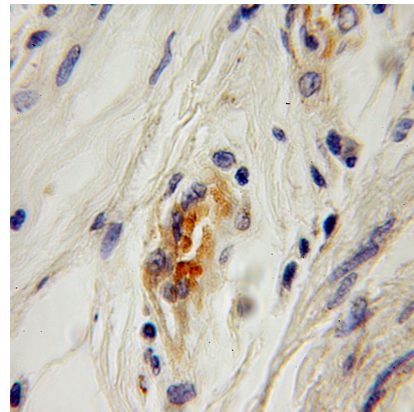
ELISA, IHC, WB, IP

## Dilutions

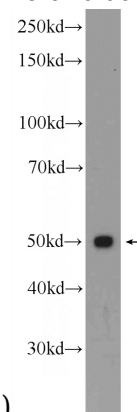
Recommended Dilution:

WB: 1:200-1:2000

## Validations

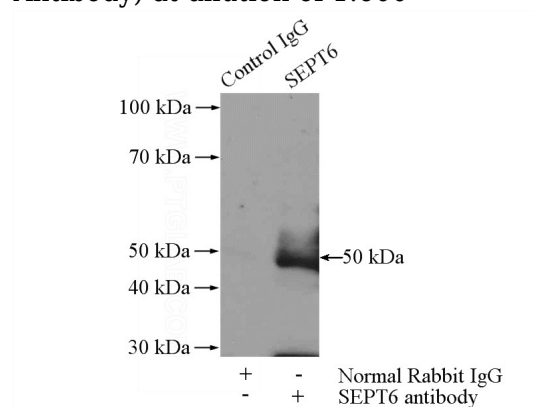


Immunohistochemical of paraffin-embedded human cervical cancer using Catalog No:115120(SEPT6 antibody) at dilution of 1:100



(under 10x lens)

Jurkat cells were subjected to SDS PAGE followed by western blot with Catalog No:115120(SEPT6 Antibody) at dilution of 1:600



IP Result of anti-SEPT6 (IP:Catalog No:115120,

# SEPT6 antibody



Catalog Number: 115120

---

4ug; Detection:Catalog No:115120 1:600) with rat brain tissue lysate 4000ug.