

Human R-Spondin 1 / RSPO1 (His Tag) recombinant protein



Catalog Number: 504120

General Information

Gene Name Synonym

Roof plate-specific spondin-1

Protein Construction

A DNA sequence encoding the human RSPO1 (NP_001033722.1) (Met 1-Ala 263) was expressed, fused with a polyhistidine tag at the C-terminus.

Organism

Human

Expression Host

Human Cells

QC Testing

Activity

1. Measured by its binding ability in a functional ELISA. Immobilized human RSPO1 at 20 µg/ml (100 µl/well) can bind human LIMPII with a linear ranger of 32-800 ng/ml.
2. Measured by its binding ability in a functional ELISA. Immobilized human RSPO1 at 20 µg/ml (100 µl/well) can bind mouse CD36 with a linear ranger of 6.4-800 ng/ml.
3. Measured by its ability to induce activation of β catenin response in a Topflash Luciferase assay using HEK293T human embryonic kidney cells. The ED₅₀ for this effect is typically 0.05-0.5 µg/mL in the presence of 5 ng/mL recombinant mouse Wnt3a.

Purity

> 98 % as determined by SDS-PAGE

Endotoxin

< 1.0 EU per µg of the protein as determined by the LAL method

Stability

Samples are stable for up to twelve months from date of receipt at -70°C

Predicted N terminal

Ser 21

Molecular Mass

The secreted recombinant human RSPO1 comprises 254 amino acids with a predicted molecular mass of 28.2 kDa. As a result of glycosylation, rhRSPO1 migrates as an approximately 42 kDa band in SDS-PAGE under reducing conditions.

Formulation

- Lyophilized from sterile PBS, pH 7.4
1. 5 % trehalose and mannitol are added as protectants before lyophilization.
 2. Please contact us for any concerns or special requirements.

Usage Guide

Storage

Store it under sterile conditions at -20°C to -80°C. It is recommended that the protein be aliquoted for optimal storage. Avoid repeated freeze-thaw cycles.

Reconstitution

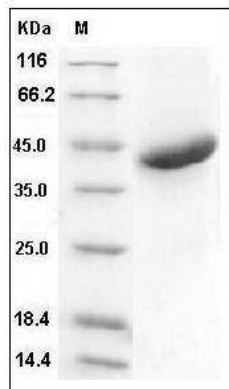
Adding sterile water, prepare a stock solution of 0.25 mg/ml. Concentration is measured by UV-Vis.

SDS-PAGE

Human R-Spondin 1 / RSP01 (His Tag) recombinant protein



Catalog Number: 504120



Human R-Spondin 1 / RSP01 Protein (His Tag)
SDS-PAGE