

Human Cathepsin S/CTSS (His Tag) recombinant protein



Catalog Number: 501120

General Information

Protein Construction

A DNA sequence encoding the pro form of human CTSS (NP_004070.3) (Met 1-Ile 331) with a carboxy-terminal polyhistidine tag was expressed.

Organism

Human

Expression Host

Human Cells

QC Testing

Activity

Measured by its ability to cleave a fluorogenic peptide substrate, (7-methoxycoumarin-4-yl) acetyl-Arg-Pro-Lys-Pro-Val-Glu-Nva-Trp-Arg-Lys (2, 4-dinitrophenyl)-NH₂ (R&D Systems, Catalog#ES002). Cleavage of ES002 can be measured using excitation and emission wavelengths at 320 nm and 405 nm, respectively. The specific activity is >300 pmoles/min/μg.

Purity

> 97 % as determined by SDS-PAGE

Endotoxin

< 1.0 EU per μg of the protein as determined by the LAL method

Stability

Samples are stable for up to twelve months from date of receipt at -70°C

Predicted N terminal

Gln 17

Molecular Mass

The secreted recombinant human CTSS consists of 326 amino acids with the predicted molecular mass of 37 kDa as estimated by SDS-PAGE under reducing conditions.

Formulation

Lyophilized from sterile PBS, pH 7.4

1. 5 % trehalose and mannitol are added as protectants before lyophilization.

2. Please contact us for any concerns or special requirements.

Usage Guide

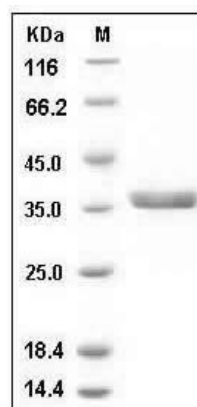
Storage

Store it under sterile conditions at -20°C to -80°C. It is recommended that the protein be aliquoted for optimal storage. Avoid repeated freeze-thaw cycles.

Reconstitution

Adding sterile water, prepare a stock solution of 0.25 mg/ml. Concentration is measured by UV-Vis.

SDS-PAGE



Human Cathepsin S / CTSS Protein (His Tag) SDS-PAGE