

General Information

Gene Name Synonym

Super protein; Synaptosomal-associated 25 kDa protein

Protein Construction

A DNA sequence encoding the human SNAP25 (P60880-1) (Met 1-Gly 206) was expressed, with a polyhistidine tag at the N-terminus.

Organism

Human

Expression Host

E. coli

QC Testing

Purity

> 90 % as determined by SDS-PAGE

Endotoxin

Please contact us for more information.

Stability

Samples are stable for up to twelve months from date of receipt at -70°C

Predicted N terminal

Met

Molecular Mass

The recombinant human SNAP25 consisting of

217 amino acids and has a calculated molecular mass of 24.8 kDa. It migrates as an approximately 28 kDa band in SDS-PAGE under reducing conditions.

Formulation

Lyophilized from sterile PBS, pH 7.4

1. 5 % trehalose and mannitol are added as protectants before lyophilization.

2. Please contact us for any concerns or special requirements.

Usage Guide

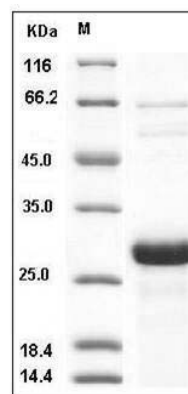
Storage

Store it under sterile conditions at -20°C to -80°C. It is recommended that the protein be aliquoted for optimal storage. Avoid repeated freeze-thaw cycles.

Reconstitution

Adding sterile water, prepare a stock solution of 0.25 mg/ml. Concentration is measured by UV-Vis.

SDS-PAGE



Human SNAP25 / SUP Protein (His Tag) SDS-PAGE