

# DDX20 antibody

Catalog Number: 109820

## Product name

DDX20 antibody

## Specificity

Human, Mouse, Rat; other species not tested.

## Antibody description

DDX20 Rabbit Polyclonal antibody. Positive IP detected in HeLa cells. Positive WB detected in HeLa cells, Jurkat cells, mouse testis tissue. Positive FC detected in HepG2 cells. Positive IF detected in HepG2 cells, HeLa cells. Positive IHC detected in human colon cancer tissue. Observed molecular weight by Western-blot: 100 kDa; 112-115 kDa

## Preparation

This antibody was obtained by immunization of DDX20 recombinant protein (Accession Number: NM\_007204). Purification method: Antigen affinity purified.

## Formulation

PBS with 0.1% sodium azide and 50% glycerol pH 7.3.

## Storage

Store at -20°C. DO NOT ALIQUOT

## Clonality

Polyclonal

## Ig Type

Rabbit IgG

## Applications

ELISA, WB, IHC, IF, IP, FC

## Dilutions

Recommended Dilution:

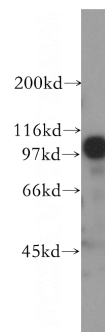
WB: 1:1000-1:10000

IP: 1:500-1:5000

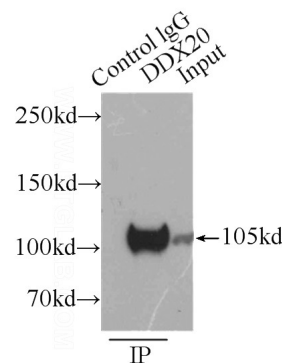
IHC: 1:20-1:200

IF: 1:20-1:200

## Validations



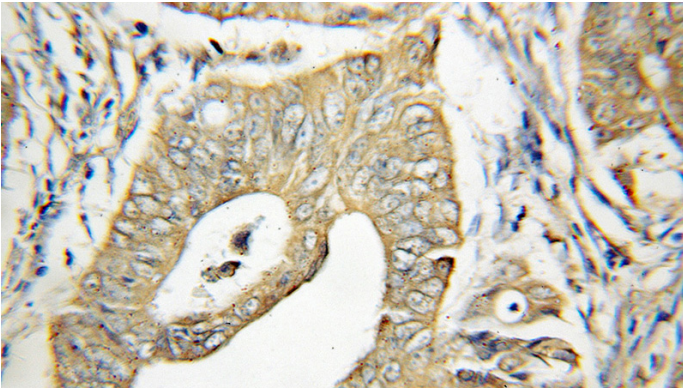
HeLa cells were subjected to SDS PAGE followed by western blot with Catalog No:109820(DDX20 antibody) at dilution of 1:500



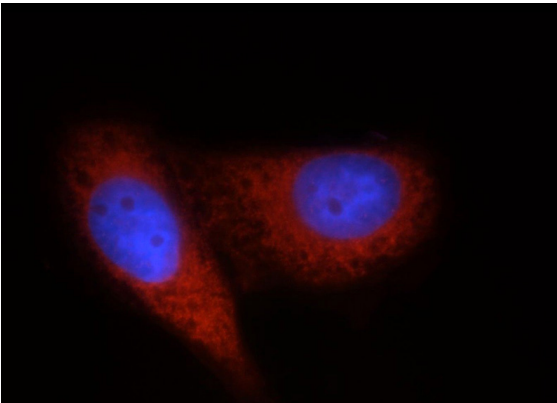
IP Result of anti-DDX20 (IP:Catalog No:109820, 4ug; Detection:Catalog No:109820 1:1000) with HeLa cells lysate 3000ug.

# DDX20 antibody

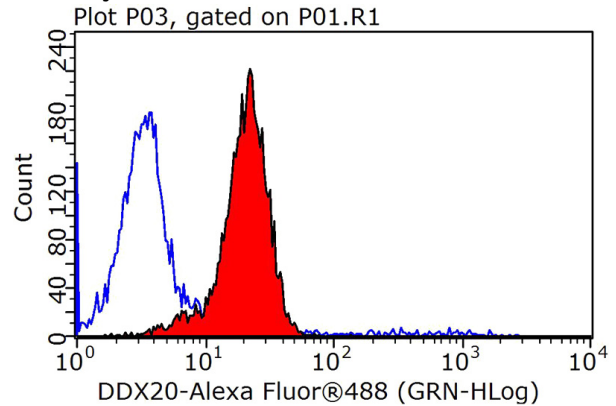
Catalog Number: 109820



Immunohistochemical of paraffin-embedded human colon cancer using Catalog No:109820(DDX20 antibody) at dilution of 1:100 (under 10x lens)



Immunofluorescent analysis of HepG2 cells, using DDX20 antibody Catalog No:109820 at 1:50 dilution and Rhodamine-labeled goat anti-rabbit IgG (red). Blue pseudocolor = DAPI (fluorescent DNA dye).



$1 \times 10^6$  HepG2 cells were stained with .2ug DDX20 antibody (Catalog No:109820, red) and control antibody (blue). Fixed with 90% MeOH blocked with 3% BSA (30 min). Alexa Fluor 488-conjugated AffiniPure Goat Anti-Rabbit IgG(H+L) with dilution 1:1000.