

# SUCLG2 antibody



Catalog Number: 115820

## Product name

SUCLG2 antibody

WB: 1:500-1:5000

IP: 1:200-1:2000

## Specificity

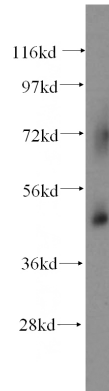
Human, Mouse, Rat; other species not tested.

IHC: 1:20-1:200

## Antibody description

SUCLG2 Rabbit Polyclonal antibody. Positive IP detected in mouse kidney tissue. Positive WB detected in human heart tissue, COLO 320 cells, mouse kidney tissue. Positive IHC detected in human colon cancer tissue, human gliomas tissue. Observed molecular weight by Western-blot: 47 kDa

## Validations



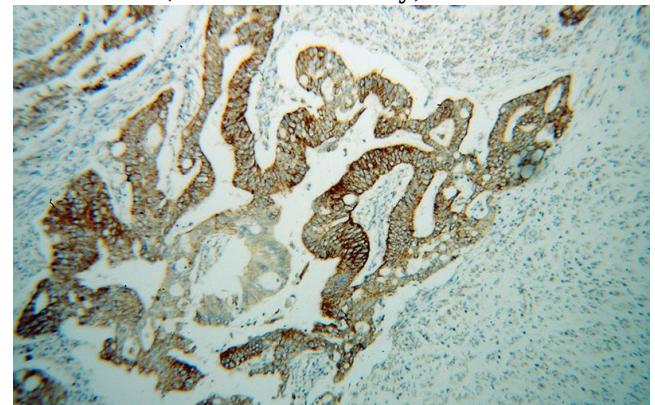
## Preparation

This antibody was obtained by immunization of SUCLG2 recombinant protein (Accession Number: XM\_047449140). Purification method: Antigen affinity purified.

human heart tissue were subjected to SDS PAGE followed by western blot with Catalog No:115820(SUCLG2 antibody) at dilution of 1:500

## Formulation

PBS with 0.02% sodium azide and 50% glycerol pH 7.3.



## Storage

Store at -20°C. DO NOT ALIQUOT

## Clonality

Polyclonal

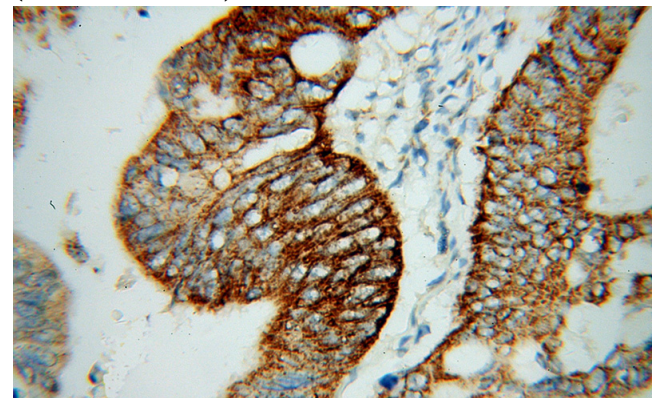
Immunohistochemical of paraffin-embedded human colon cancer using Catalog No:115820(SUCLG2 antibody) at dilution of 1:100 (under 10x lens)

## Ig Type

Rabbit IgG

## Applications

ELISA, WB, IHC, IP



## Dilutions

Recommended Dilution:

# SUCLG2 antibody

Catalog Number: 115820

---

Immunohistochemical of paraffin-embedded human colon cancer using Catalog No:115820(SUCLG2 antibody) at dilution of 1:100

IP Result of anti-SUCLG2 (IP:Catalog No:115820, 4ug; Detection:Catalog No:115820 1:600) with mouse kidney tissue lysate 4800ug.

