

# RPN2 antibody

Catalog Number: 114820

## Product name

RPN2 antibody

## Specificity

Human, Mouse, Rat; other species not tested.

## Antibody description

RPN2 Rabbit Polyclonal antibody. Positive IHC detected in human ovary tumor tissue. Positive WB detected in NIH/3T3 cells. Observed molecular weight by Western-blot: 68-69 kDa

## Preparation

This antibody was obtained by immunization of RPN2 recombinant protein (Accession Number: NM\_002951). Purification method: Antigen affinity purified.

## Formulation

PBS with 0.1% sodium azide and 50% glycerol pH 7.3.

## Storage

Store at -20°C. DO NOT ALIQUOT

## Clonality

Polyclonal

## Ig Type

Rabbit IgG

## Applications

ELISA, IHC, WB

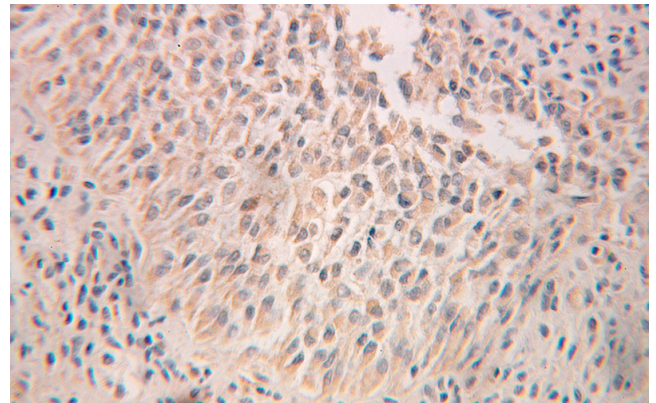
## Dilutions

Recommended Dilution:

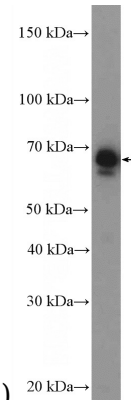
WB: 1:200-1:2000

IHC: 1:20-1:200

## Validations



Immunohistochemical of paraffin-embedded human ovary tumor using Catalog No:114820(RPN2 antibody) at dilution of 1:100



(under 25x lens)

NIH/3T3 cells were subjected to SDS PAGE followed by western blot with Catalog No:114820(RPN2 Antibody) at dilution of 1:600