

# Anti-DOPA Decarboxylase/DDC antibody



Catalog Number: 103820

## Product name

Anti-DOPA Decarboxylase/DDC antibody

## Immunogen

[Human DOPA Decarboxylase/DDC \(His Tag\) recombinant protein](#)

## Specificity

Human DOPA Decarboxylase / DDC

## Antibody description

Rabbit monoclonal to DOPA Decarboxylase/DDC

## Preparation

This antibody was obtained from a rabbit immunized with purified, recombinant Human DOPA Decarboxylase / DDC (rh DOPA Decarboxylase / DDC; NP\_000781.1; Met 1-Glu 480).

## Formulation

0.2 µm filtered solution in PBS with 5% trehalose

## Storage

This antibody can be stored at 2°C-8°C for one month without detectable loss of activity. Antibody products are stable for twelve months from date of receipt when stored at -20°C to -80°C.

Preservative-Free.

Sodium azide is recommended to avoid contamination (final concentration 0.05%-0.1%). It is toxic to cells and should be disposed of properly. Avoid repeated freeze-thaw cycles.

## Clonality

Monoclonal

## Ig Type

Rabbit IgG

## Applications

ELISA, IHC-P

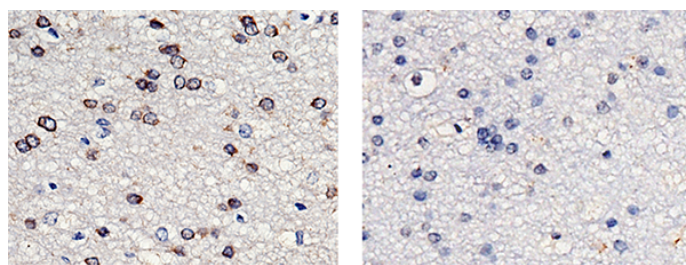
## Dilutions

ELISA: 0.1-0.2 µg/mL

This antibody can be used at 0.1-0.2 µg/mL with the appropriate secondary reagents to detect Human DDC.

IHC-P: 5-10 µg/mL

## Validations



DDC Antibody	+	+
DDC Antigen	-	+

DOPA Decarboxylase / DDC Antibody, Rabbit MAb, Immunohistochemistry

Immunochemical staining of human DDC in human brain with rabbit monoclonal antibody (5 µg/mL, formalin-fixed paraffin embedded sections). The left panel: tissue incubated with primary antibody; The right panel: tissue incubated with the mixture of primary antibody and antigen (recombinant protein).