

MRPL27 antibody



Catalog Number: 112820

Product name

MRPL27 antibody

IHC: 1:20-1:200

IF: 1:50-1:500

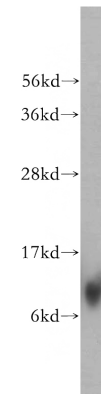
Specificity

Human, Mouse, Rat; other species not tested.

Validations

Antibody description

MRPL27 Rabbit Polyclonal antibody. Positive WB detected in A431 cells, BxPC-3 cells. Positive IF detected in A431 cells. Positive IHC detected in human skin cancer tissue. Observed molecular weight by Western-blot: 10 kDa



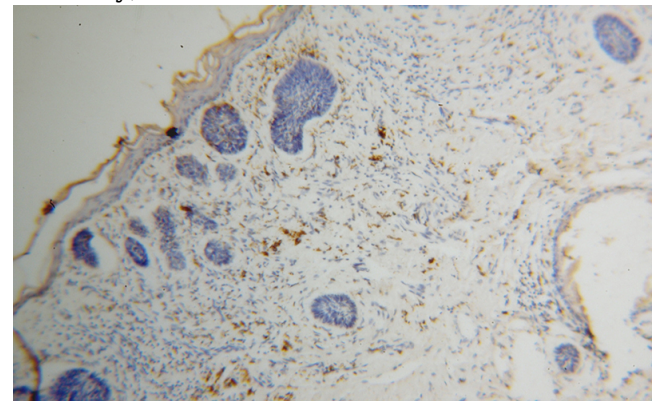
Preparation

This antibody was obtained by immunization of MRPL27 recombinant protein (Accession Number: NM_016504). Purification method: Antigen affinity purified.

A431 cells were subjected to SDS PAGE followed by western blot with Catalog No:112820(MRPL27 antibody) at dilution of 1:300

Formulation

PBS with 0.02% sodium azide and 50% glycerol pH 7.3.



Storage

Store at -20°C. DO NOT ALIQUOT

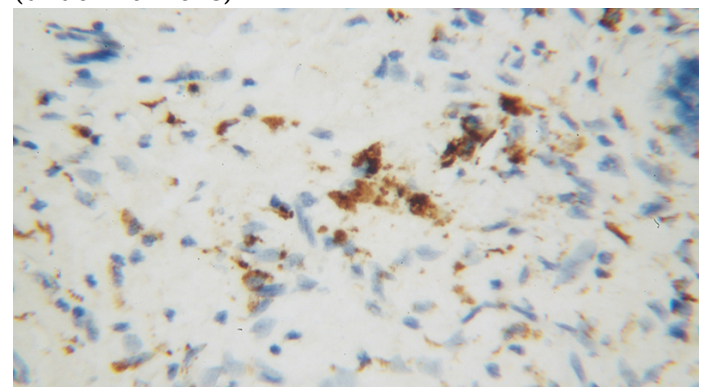
Clonality

Polyclonal

Immunohistochemical of paraffin-embedded human skin cancer using Catalog No:112820(MRPL27 antibody) at dilution of 1:50 (under 10x lens)

Ig Type

Rabbit IgG



Applications

ELISA, WB, IHC, IF

Dilutions

Recommended Dilution:

WB: 1:500-1:5000

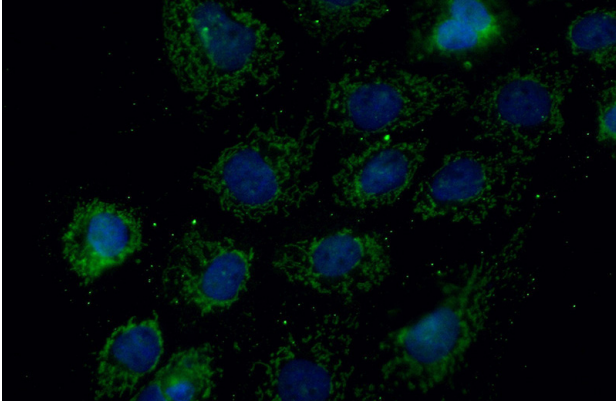
Immunohistochemical of paraffin-embedded

MRPL27 antibody



Catalog Number: 112820

human skin cancer using Catalog
No:112820(MRPL27 antibody) at dilution of 1:50
(under 40x lens)



Immunofluorescent analysis of (10%
Formaldehyde) fixed A431 cells using Catalog
No:112820(MRPL27 Antibody) at dilution of 1:50
and Alexa Fluor 488-conjugated AffiniPure Goat
Anti-Rabbit IgG(H+L)