

BAP29 antibody

Catalog Number: 108420

Product name

BAP29 antibody

IHC: 1:20-1:200

IF: 1:10-1:100

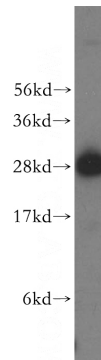
Specificity

Human, Mouse, Rat; other species not tested.

Antibody description

BAP29 Rabbit Polyclonal antibody. Positive FC detected in HEK-293 cells. Positive IHC detected in human lymphoma tissue. Positive IF detected in Hela cells. Positive WB detected in Raji cells, COLO 320 cells. Observed molecular weight by Western-blot: 28kd

Validations



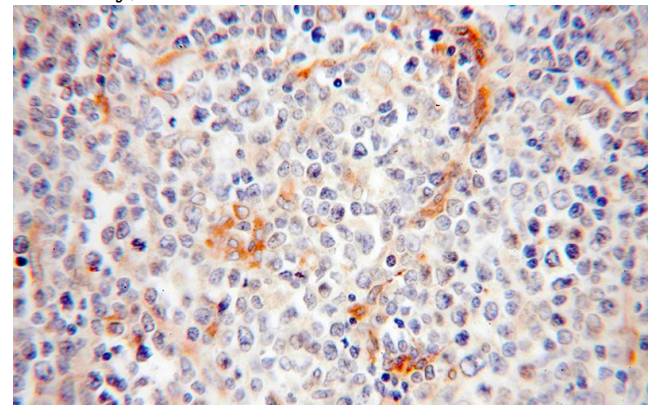
Preparation

This antibody was obtained by immunization of BAP29 recombinant protein (Accession Number: NM_001371354). Purification method: Antigen affinity purified.

Raji cells were subjected to SDS PAGE followed by western blot with Catalog No:108420(BCAP29 antibody) at dilution of 1:1000

Formulation

PBS with 0.02% sodium azide and 50% glycerol pH 7.3.



Storage

Store at -20°C. DO NOT ALIQUOT

Clonality

Polyclonal

Immunohistochemical of paraffin-embedded human lymphoma using Catalog No:108420(BCAP29 antibody) at dilution of 1:200 (under 40x lens)

Ig Type

Rabbit IgG

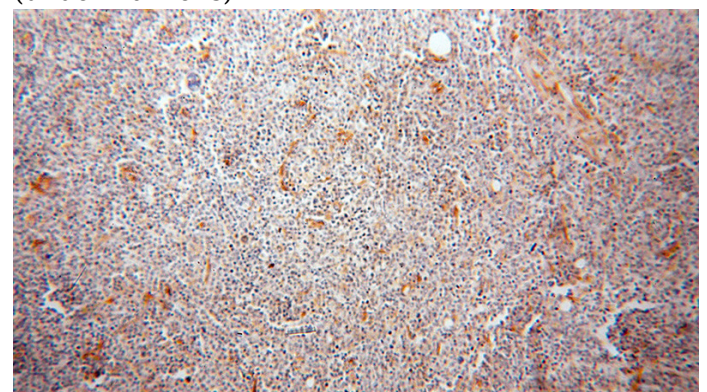
Applications

ELISA, WB, IHC, IF, FC

Dilutions

Recommended Dilution:

WB: 1:1000-1:10000

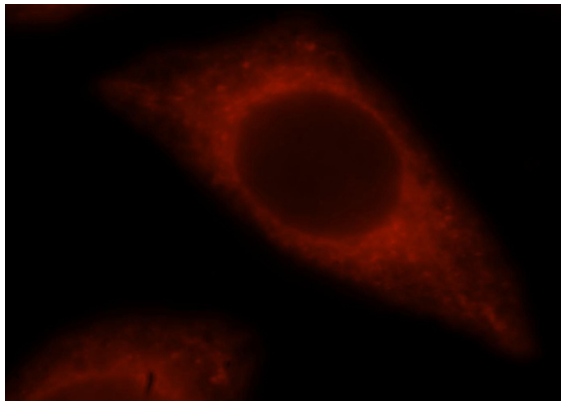


Immunohistochemical of paraffin-embedded

BAP29 antibody

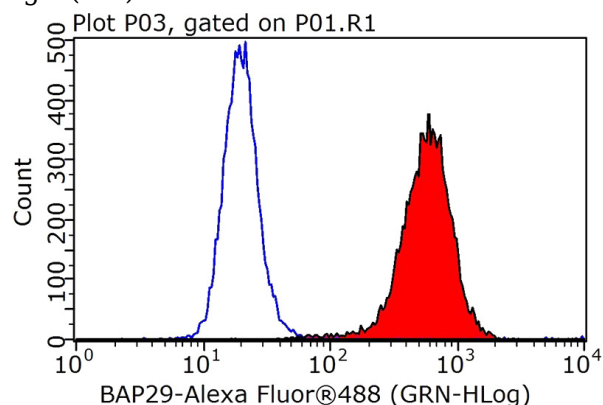
Catalog Number: 108420

human lymphoma using Catalog
No:108420(BCAP29 antibody) at dilution of 1:200
(under 10x lens)



Immunofluorescent analysis of HeLa cells, using
BCAP29 antibody Catalog No:108420 at 1:25
dilution and Rhodamine-labeled goat anti-rabbit

IgG (red).



1X10⁶ HEK-293 cells were stained with 0.2ug
BCAP29 antibody (Catalog No:108420, red) and
control antibody (blue). Fixed with 90% MeOH
blocked with 3% BSA (30 min). FITC-Goat anti-
Rabbit IgG with dilution 1:100.