

Anti-GTPase HRAS Rabbit antibody



Catalog Number: 167420

Product name

Anti-GTPase HRAS Rabbit antibody

Specificity

Human, Mouse, Rat

Antibody description

GTPase HRAS Rabbit polyclonal antibody

Preparation

Antigen: A synthetic peptide of human Ras

Formulation

Supplied in 50nM Tris-Glycine(pH 7.4), 0.15M NaCl, 40%Glycerol, 0.01% sodium azide and 0.05% BSA.

Storage

Store at -20°C. Stable for 12 months from date of receipt.

Clonality

Polyclonal

Ig Type

Rabbit IgG

Applications

WB, ICC/IF, IP

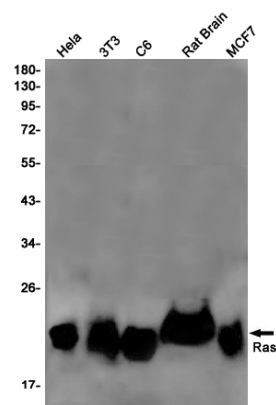
Dilutions

WB: 1/1000-1/5000

ICC/IF: 1/20-1/50

IP: 1/20-1/50

Validations



Western blot detection of Ras in HeLa,3T3,C6,Rat Brain,MCF7 cell lysates using Ras Rabbit pAb(1:1000 diluted).Predicted band size:22kDa.Observed band size:22kDa.