

# Anti-KIR3DL3 antibody



Catalog Number: 176420

## Product name

Anti-KIR3DL3 antibody

## Specificity

Human

## Antibody description

Rabbit polyclonal antibody to KIR3DL3

## Preparation

This antigen of this antibody was the antiserum was produced against synthesized peptide derived from the internal region of human kir3dl3. aa range:231-280

## Formulation

Liquid, Liquid in PBS containing 50% glycerol, 0.5% BSA and 0.02% sodium azide.

## Storage

Store at +4°C after thawing. Aliquot store at -20°C or -80°C. Avoid repeated freeze / thaw cycles.

## Clonality

Polyclonal

## Ig Type

Rabbit IgG

## Applications

WB, IHC-P

## Dilutions

WB: 1:500-1:2000

IHC-P: 1:100-300

## Validations

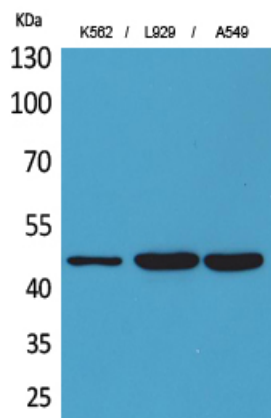


Fig1:: Western Blot analysis of K562, L929, A549 cells using CD158z Polyclonal Antibody.. Secondary antibody (catalog#: HA1001) was diluted at 1:20000

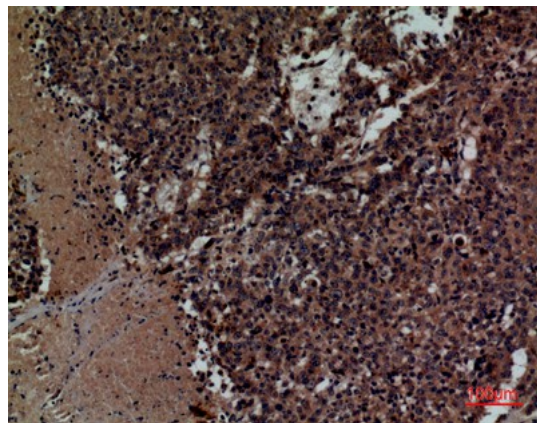


Fig2:: Immunohistochemical analysis of paraffin-embedded human-lung-cancer, antibody was diluted at 1:100