

RAB22A antibody

Catalog Number: 114420

Product name

RAB22A antibody

IP: 1:200-1:1000

IHC: 1:20-1:200

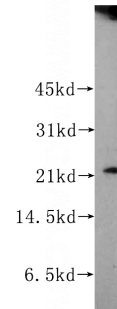
Specificity

Human, Mouse; other species not tested.

Validations

Antibody description

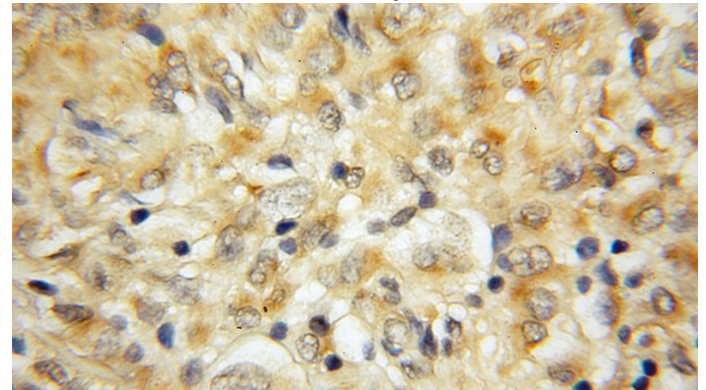
RAB22A Rabbit Polyclonal antibody. Positive IHC detected in human gliomas tissue. Positive IP detected in COLO 320 cells. Positive WB detected in BxPC-3 cells, COLO 320 cells, Jurkat cells. Observed molecular weight by Western-blot: 22 kDa



Preparation

This antibody was obtained by immunization of RAB22A recombinant protein (Accession Number: NM_020673). Purification method: Antigen affinity purified.

BxPC-3 cells were subjected to SDS PAGE followed by western blot with Catalog No:114420(RAB22A antibody) at dilution of 1:400



Formulation

PBS with 0.1% sodium azide and 50% glycerol pH 7.3.

Storage

Store at -20°C. DO NOT ALIQUOT

Immunohistochemical of paraffin-embedded human gliomas using Catalog No:114420(RAB22A antibody) at dilution of 1:50 (under 10x lens)

Clonality

Polyclonal

Ig Type

Rabbit IgG

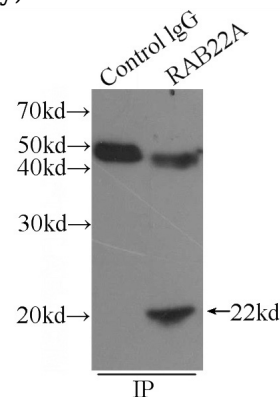
Applications

ELISA, WB, IHC, IP

Dilutions

Recommended Dilution:

WB: 1:200-1:2000



IP Result of anti-RAB22A (IP:Catalog No:114420, 3ug; Detection:Catalog No:114420 1:300) with

RAB22A antibody



Catalog Number: 114420

COLO 320 cells lysate 1720ug.