

ORC2L antibody

Catalog Number: 113420

Product name

ORC2L antibody

Specificity

Human, Mouse, Rat; other species not tested.

Antibody description

ORC2L Rabbit Polyclonal antibody. Positive WB detected in HepG2 cells. Positive IP detected in HepG2 cells. Observed molecular weight by Western-blot: 70-74 kDa

Preparation

This antibody was obtained by immunization of ORC2L recombinant protein (Accession Number: NM_006190). Purification method: Antigen affinity purified.

Formulation

PBS with 0.02% sodium azide and 50% glycerol pH 7.3.

Storage

Store at -20°C. DO NOT ALIQUOT

Clonality

Polyclonal

Ig Type

Rabbit IgG

Applications

ELISA, WB, IP

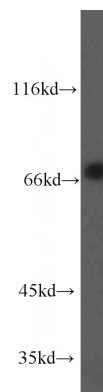
Dilutions

Recommended Dilution:

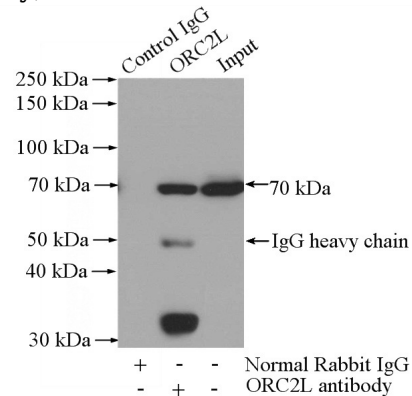
WB: 1:500-1:5000

IP: 1:200-1:1000

Validations



HepG2 cells were subjected to SDS PAGE followed by western blot with Catalog No:113420(ORC2L antibody) at dilution of 1:500



IP Result of anti-ORC2L (IP:Catalog No:113420, 4ug; Detection:Catalog No:113420 1:300) with HepG2 cells lysate 1200ug.