

# HLA-DPA1 antibody



Catalog Number: 111420

## Product name

HLA-DPA1 antibody

## Specificity

Human; other species not tested.

## Antibody description

HLA-DPA1 Rabbit Polyclonal antibody. Positive WB detected in Raji cells. Observed molecular weight by Western-blot: 33 kDa

## Preparation

This antibody was obtained by immunization of HLA-DPA1 recombinant protein (Accession Number: NM\_001242524). Purification method: Antigen affinity purified.

## Formulation

PBS with 0.02% sodium azide and 50% glycerol pH 7.3.

## Storage

Store at -20°C. DO NOT ALIQUOT

## Clonality

Polyclonal

## Ig Type

Rabbit IgG

## Applications

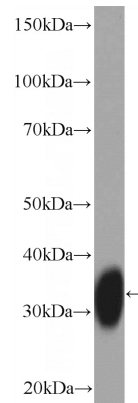
ELISA, WB

## Dilutions

Recommended Dilution:

WB: 1:500-1:5000

## Validations



Raji cells were subjected to SDS PAGE followed by western blot with Catalog No:111420(HLA-DPA1 Antibody) at dilution of 1:1000