

# Human PSG6 (His Tag) recombinant protein



Catalog Number: 501420

## General Information

### Gene Name Synonym

Pregnancy-specific beta-1-glycoprotein 10;  
Pregnancy-specific beta-1-glycoprotein 12

### Protein Construction

A DNA sequence encoding the human PSG6 (Met 1-His 424) (NP\_001027020) was expressed, with a C-terminal polyhistidine tag.

### Organism

Human

### Expression Host

Baculovirus-Insect Cells

## QC Testing

### Purity

> 87 % as determined by SDS-PAGE

### Endotoxin

< 1.0 EU per  $\mu\text{g}$  of the protein as determined by the LAL method

### Stability

Samples are stable for up to twelve months from date of receipt at  $-70^{\circ}\text{C}$

### Predicted N terminal

Gln 35

### Molecular Mass

The secreted recombinant human PSG6 consists of

400 amino acids and predicts a molecular mass of 45.2 KDa. The apparent molecular mass of the protein is approximately 58 Kda in SDS-PAGE under reducing conditions due to glycosylation.

### Formulation

Lyophilized from sterile 20mM Tris, 500mM NaCl, pH 7.4

1. 5 % trehalose and mannitol are added as protectants before lyophilization.

2. Please contact us for any concerns or special requirements.

## Usage Guide

### Storage

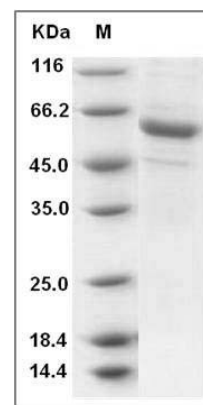
Store it under sterile conditions at  $-20^{\circ}\text{C}$  to  $-80^{\circ}\text{C}$ .

It is recommended that the protein be aliquoted for optimal storage. Avoid repeated freeze-thaw cycles.

### Reconstitution

Adding sterile water, prepare a stock solution of 0.25 mg/ml. Concentration is measured by UV-Vis.

### SDS-PAGE



Human PSG6 / PSG10 Protein (His Tag) SDS-PAGE