

# EYA1 antibody

Catalog Number: 110420

## Product name

EYA1 antibody

IHC: 1:20-1:200

IF: 1:20-1:200

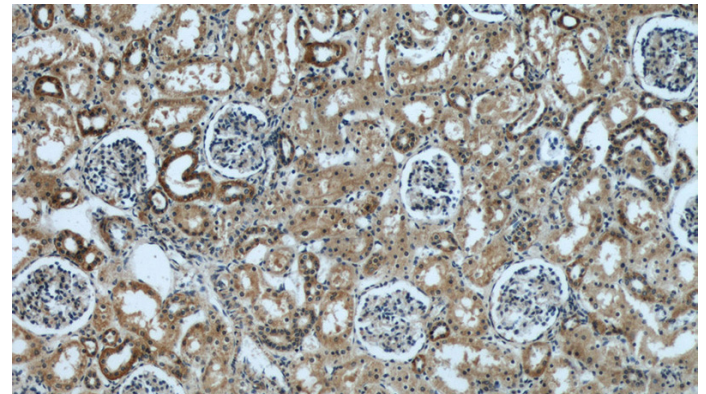
## Specificity

Human, Mouse; other species not tested.

## Validations

## Antibody description

EYA1 Rabbit Polyclonal antibody. Positive IF detected in HeLa cells. Positive IHC detected in human kidney tissue. Positive WB detected in mouse kidney tissue, HeLa cells, mouse colon tissue, NCCIT cell. Observed molecular weight by Western-blot: 60 kDa;50 kDa



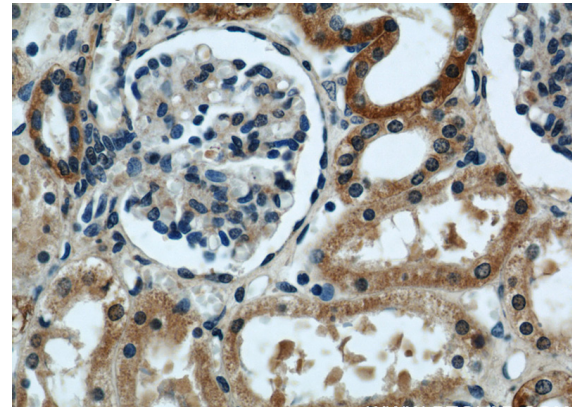
## Preparation

This antibody was obtained by immunization of EYA1 recombinant protein (Accession Number: NM\_001370335). Purification method: Antigen affinity purified.

Immunohistochemical of paraffin-embedded human kidney using Catalog No:110420(EYA1 antibody) at dilution of 1:50 (under 10x lens)

## Formulation

PBS with 0.02% sodium azide and 50% glycerol pH 7.3.



## Storage

Store at -20°C. DO NOT ALIQUOT

Immunohistochemical of paraffin-embedded human kidney using Catalog No:110420(EYA1 antibody) at dilution of 1:50 (under 40x lens)

## Clonality

Polyclonal

## Ig Type

Rabbit IgG

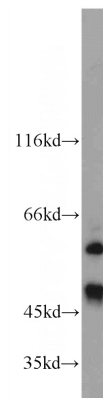
## Applications

ELISA, IHC, WB, IF

## Dilutions

Recommended Dilution:

WB: 1:200-1:2000



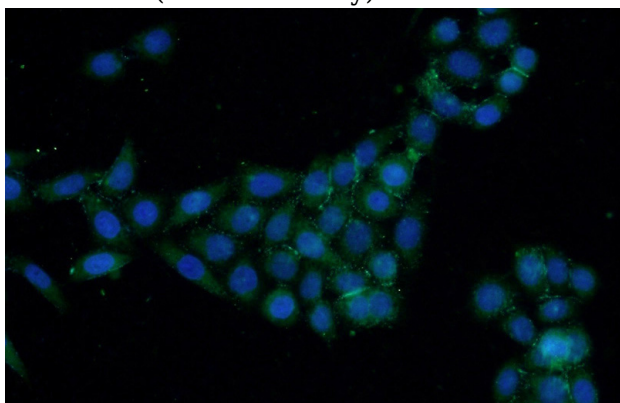
mouse kidney tissue were subjected to SDS PAGE followed by western blot with Catalog

# EYA1 antibody

Catalog Number: 110420

---

No:110420(EYA1 Antibody) at dilution of 1:600



Immunofluorescent analysis of HeLa cells using Catalog No:110420(EYA1 Antibody) at dilution of 1:50 and Alexa Fluor 488-conjugated AffiniPure Goat Anti-Rabbit IgG(H+L)