

# Anti-Human Kappa Rabbit antibody



Catalog Number: 168020

## Product name

Rabbit IgG

Anti-Human Kappa Rabbit antibody

## Applications

## Specificity

WB, IHC-P, ICC/IF

Human

## Dilutions

## Antibody description

WB: 1/500-1/2000

Human Kappa Rabbit monoclonal antibody

IHC: 1/50-1/200

## Preparation

ICC/IF: 1/50-1/200

Antigen: A synthesized peptide derived from human Human Kappa Chain

## Validations

## Formulation

Rabbit IgG in phosphate buffered saline , pH 7.4, 150mM NaCl, 0.02% sodium azide and 50% glycerol.

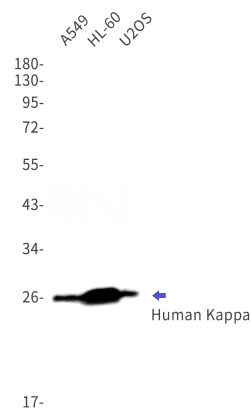
## Storage

Store at 4°C short term. Store at -20°C long term. Avoid freeze / thaw cycle.

## Clonality

Monoclonal

## Ig Type



Western blot detection of Human Kappa in A549,HL-60,U2OS cell lysates using Human Kappa Rabbit mAb(1:1000 diluted).Observed band size:26kDa.