

TGF-beta 2-Specific antibody



Catalog Number: 116020

Product name

TGF-beta 2-Specific antibody

IHC: 1:20-1:200

IF: 1:20-1:200

Specificity

Human, Mouse, Rat; other species not tested.

Antibody description

TGF-beta 2-Specific Rabbit Polyclonal antibody. Positive WB detected in A549 cells, K-562 cells, rat brain tissue. Positive IF detected in HeLa cells. Positive IHC detected in human breast cancer tissue. Observed molecular weight by Western-blot: 48 kDa

Preparation

This antibody was obtained by immunization of Peptide (Accession Number: NM_003238). Purification method: Antigen affinity purified.

Formulation

PBS with 0.02% sodium azide and 50% glycerol pH 7.3.

Storage

Store at -20°C. DO NOT ALIQUOT

Clonality

Polyclonal

Ig Type

Rabbit IgG

Applications

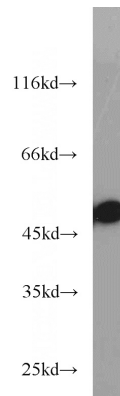
ELISA, WB, IHC, IF

Dilutions

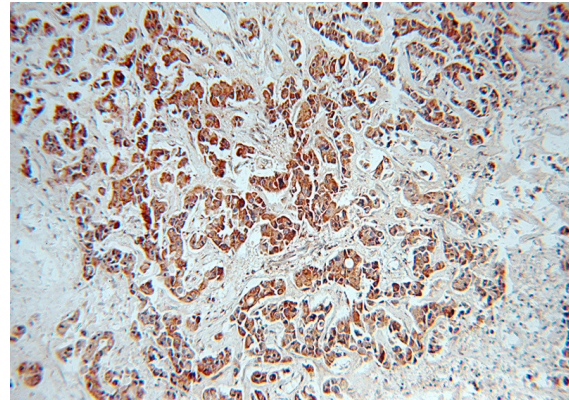
Recommended Dilution:

WB: 1:200-1:2000

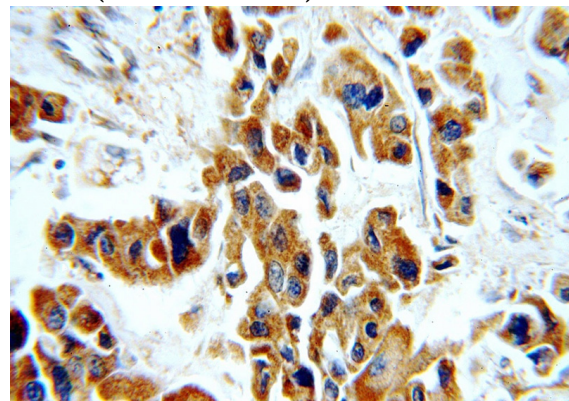
Validations



A549 cells were subjected to SDS PAGE followed by western blot with Catalog No:116020(TGFB2-Specific antibody) at dilution of 1:600



Immunohistochemical of paraffin-embedded human breast cancer using Catalog No:116020(TGFB2-Specific antibody) at dilution of 1:100 (under 10x lens)



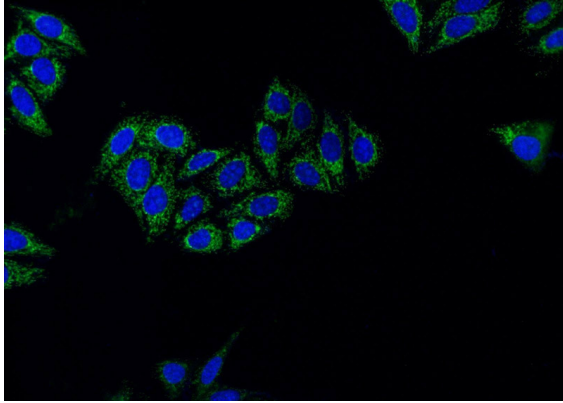
Immunohistochemical of paraffin-embedded

TGF-beta 2-Specific antibody



Catalog Number: 116020

human breast cancer using Catalog No:116020(TGFB2-Specific antibody) at dilution of 1:100 (under 40x lens)



Immunofluorescent analysis of HeLa cells using Catalog No:116020(TGFB2-Specific Antibody) at dilution of 1:50 and Alexa Fluor 488-conjugated AffiniPure Goat Anti-Rabbit IgG(H+L)