

Anti-C4.4A/LYPD3 antibody



Catalog Number: 104020

Product name

Anti-C4.4A/LYPD3 antibody

Immunogen

[Human C4.4A/LYPD3 \(His Tag\) recombinant protein](#)

Specificity

Human C4.4A / LYPD3

Antibody description

Rabbit monoclonal to C4.4A/LYPD3

Preparation

This antibody was obtained from a rabbit immunized with purified, recombinant Human C4.4A / LYPD3 (rh C4.4A / LYPD3; NP_055215.2; Met 1-His 286).

Formulation

0.2 µm filtered solution in PBS with 5% trehalose

Storage

This antibody can be stored at 2°C-8°C for one month without detectable loss of activity. Antibody products are stable for twelve months from date of receipt when stored at -20°C to -80°C.

Preservative-Free.

Sodium azide is recommended to avoid contamination (final concentration 0.05%-0.1%). It is toxic to cells and should be disposed of properly. Avoid repeated freeze-thaw cycles.

Clonality

Monoclonal

Ig Type

Rabbit IgG

Applications

ELISA, WB, FCM, IF, ICC/IF

Dilutions

WB: 5-10 µg/mL

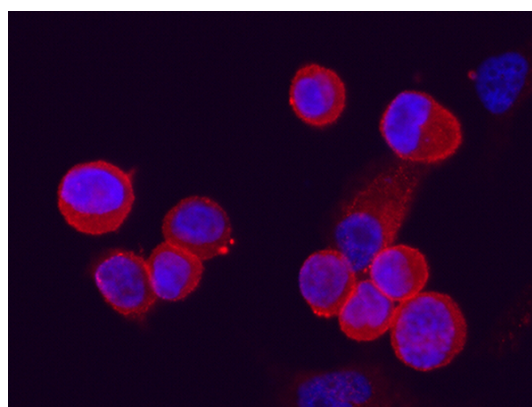
ELISA: 0.1-0.2 µg/mL

This antibody can be used at 0.1-0.2 µg/mL with the appropriate secondary reagents to detect Human LYPD3. The detection limit for Human LYPD3 is approximately 0.0049 ng/well.

FCM: 0.5-2 µg/Test

ICC/IF: 10-25 µg/mL

Validations



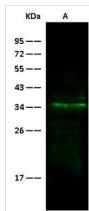
C4.4A / LYPD3 Antibody, Rabbit MAb, Immunofluorescence

Immunofluorescence staining of Human LYPD3 in PC3 cells. Cells were fixed with 4% PFA, blocked with 10% serum, and incubated with rabbit anti-Human LYPD3 monoclonal antibody (15 µg/ml) at 37°C 1 hour. Then cells were stained with the Alexa Fluor® 594-conjugated goat Anti-rabbit IgG secondary antibody (red) and counterstained with DAPI (blue). Positive staining was localized to cell

Anti-C4.4A/LYPD3 antibody



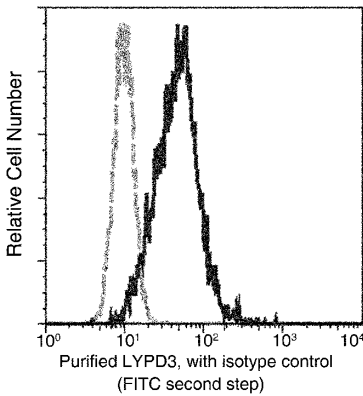
Catalog Number: 104020



Lanes	
Items	A
Sample (whole cell lysate)	HeLa
Sample Volume (cells/lane)	2.5 × 10 ⁶
Gel	13% SDS-PAGE reducing gel
Recommended Concentration	5-10 μg/ml
Secondary Antibody	Dylight 800-Labeled Antibody To Rabbit IgG (H+L), at 1:5000 dilution.

membrane.

C4.4A / LYPD3 Antibody, Rabbit MAb, Western



blot

C4.4A / LYPD3 Antibody, Rabbit MAb

Flow cytometric analysis of Human LYPD3 expression on PC-3 cells. Cells were stained with purified anti-Human LYPD3, then a FITC-conjugated second step antibody. The fluorescence histograms were derived from gated events with the forward and side light-scatter characteristics of intact cells.