

# Anti-IGHM antibody



Catalog Number: 176710

## Product name

Anti-IGHM antibody

## Specificity

Human

## Antibody description

Rabbit polyclonal antibody to IGHM

## Preparation

This antigen of this antibody was native protein.

## Formulation

Liquid, 1\*PBS (pH7.4), 0.2% BSA, 40% Glycerol.  
Preservative: 0.05% Sodium Azide.

## Storage

Store at +4°C after thawing. Aliquot store at -20°C or -80°C. Avoid repeated freeze / thaw cycles.

## Clonality

Polyclonal

## Ig Type

Rabbit IgG

## Applications

WB, IHC-P

## Dilutions

WB: 1:500-1:2,000

IHC-P: 1:50-1:200

## Validations

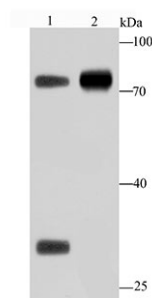


Fig1:: Western blot analysis of human IgM on Human plasma (1) and Raji (2) lysate using anti-Human IgM antibody at 1/1,000 dilution.

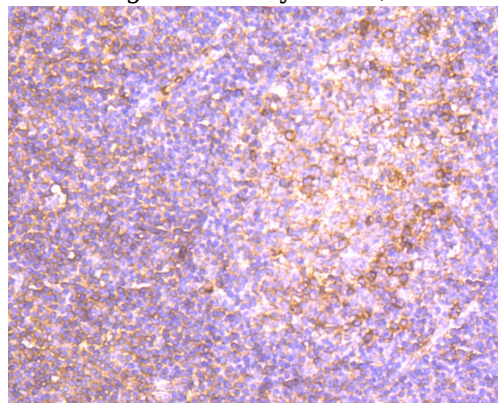


Fig2:: Immunohistochemical analysis of paraffin-embedded human tonsil tissue using anti-Human IgM antibody. Counter stained with hematoxylin.

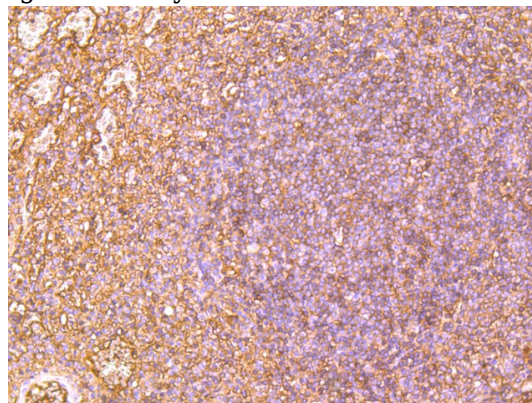


Fig3:: Immunohistochemical analysis of paraffin-embedded human spleen tissue using anti-Human IgM antibody. Counter stained with hematoxylin.