

Anti-PUMA Rabbit antibody



Catalog Number: 166710

Product name

Anti-PUMA Rabbit antibody

Specificity

Human, Mouse, Rat

Antibody description

PUMA Rabbit polyclonal antibody

Preparation

Antigen: A synthesized peptide derived from human PUMA

Formulation

Rabbit IgG in phosphate buffered saline , pH 7.4, 150mM NaCl, 0.02% sodium azide and 50% glycerol.

Storage

Store at 4°C short term. Store at -20°C long term. Avoid freeze / thaw cycle.

Clonality

Polyclonal

Ig Type

Rabbit IgG

Applications

WB, IHC-P, ICC/IF, FC

Dilutions

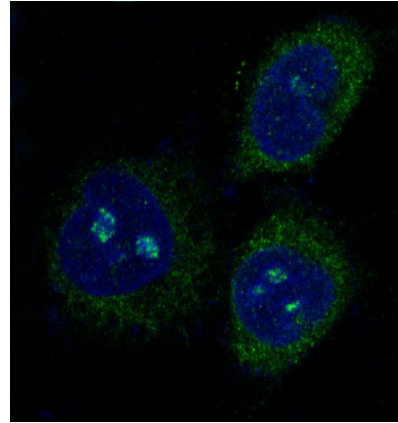
WB: 1/500-1/2000

IHC: 1/50-1/200

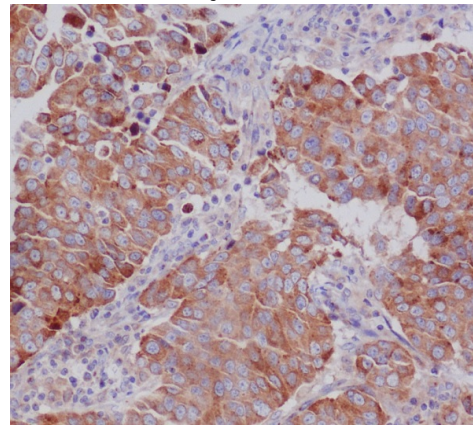
ICC/IF: 1/50-1/200

FC: 1/50

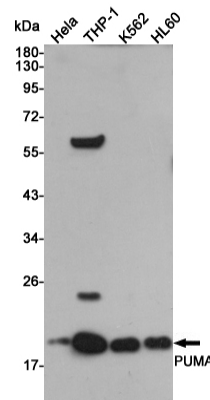
Validations



Immunofluorescent analysis of HeLa cells, using PUMA Antibody .



Immunohistochemical analysis of paraffin-embedded human breast cancer, using PUMA



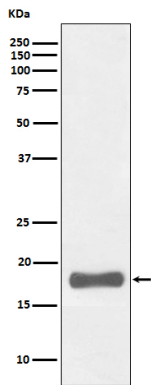
Antibody.

Western blot analysis of PUMA expression in HeLa, THP-1, K562 and HL60 cell lysates using PUMA antibody at 1/1000 dilution. Predicted band size: 18KDa. Observed band size: 18KDa.

Anti-PUMA Rabbit antibody



Catalog Number: 166710



Western blot analysis of PUMA expression in K562 cell lysate.