

# RING1 antibody

Catalog Number: 114710

## Product name

RING1 antibody

## Specificity

Human, Mouse, Rat; other species not tested.

## Antibody description

RING1 Rabbit Polyclonal antibody. Positive IHC detected in human prostate cancer tissue. Positive WB detected in mouse skeletal muscle tissue, BxPC-3 cells, PC-3 cells. Observed molecular weight by Western-blot: 50 kDa

## Preparation

This antibody was obtained by immunization of RING1 recombinant protein (Accession Number: NM\_002931). Purification method: Antigen affinity purified.

## Formulation

PBS with 0.02% sodium azide and 50% glycerol pH 7.3.

## Storage

Store at -20°C. DO NOT ALIQUOT

## Clonality

Polyclonal

## Ig Type

Rabbit IgG

## Applications

ELISA, WB, IHC

## Dilutions

Recommended Dilution:

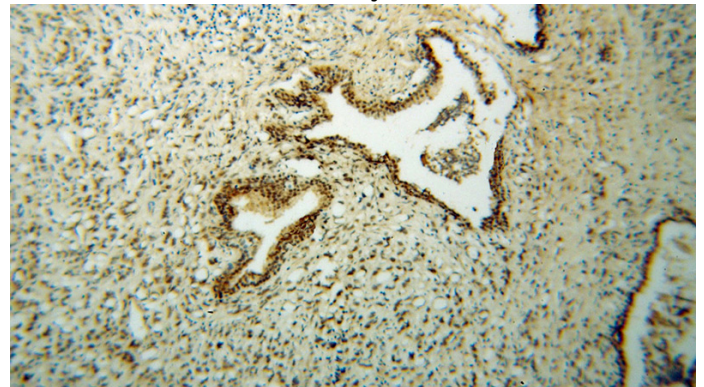
WB: 1:500-1:5000

IHC: 1:20-1:200

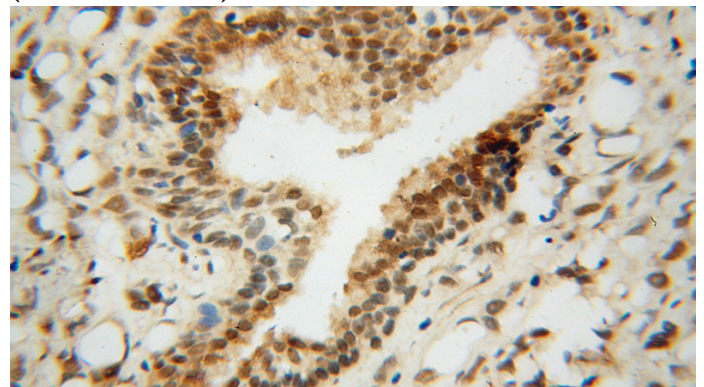
## Validations



mouse skeletal muscle tissue were subjected to SDS PAGE followed by western blot with Catalog No:114710(RING1 antibody) at dilution of 1:500



Immunohistochemical of paraffin-embedded human prostate cancer using Catalog No:114710(RING1 antibody) at dilution of 1:50 (under 10x lens)



Immunohistochemical of paraffin-embedded human prostate cancer using Catalog No:114710(RING1 antibody) at dilution of 1:50

# RING1 antibody



Catalog Number: 114710

---

(under 40x lens)