

UHRF2 Polyclonal Antibody



Catalog Number: 161710

Product name

UHRF2 Polyclonal Antibody

Specificity

Human, Mouse, Rat

Antibody description

Polyclonal antibody to UHRF2

Preparation

Antigen: Recombinant fusion protein containing a sequence corresponding to amino acids 441-622 of human UHRF2 (NP_690856.1).

Formulation

PBS with 0.02% sodium azide, 50% glycerol, pH7.3.

Storage

Store at -20°C. Avoid freeze / thaw cycles.

Clonality

Polyclonal

Ig Type

Rabbit IgG

Applications

WB, IHC, IF

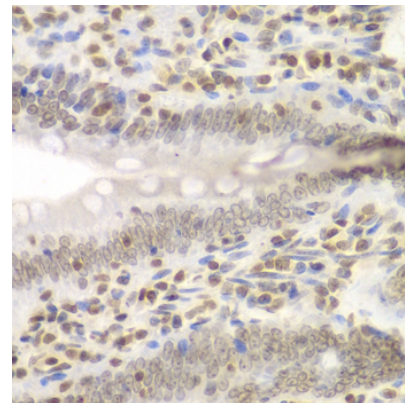
Dilutions

WB 1:500 - 1:2000

IHC 1:50 - 1:200

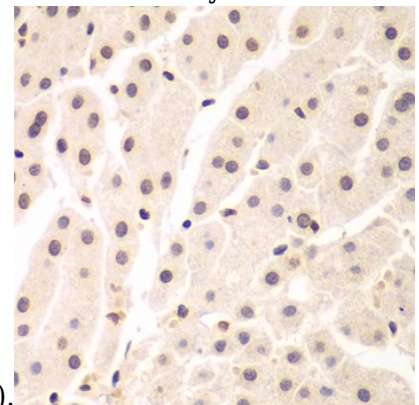
IF 1:50 - 1:200

Validations



Immunohistochemistry - UHRF2 Polyclonal Antibody

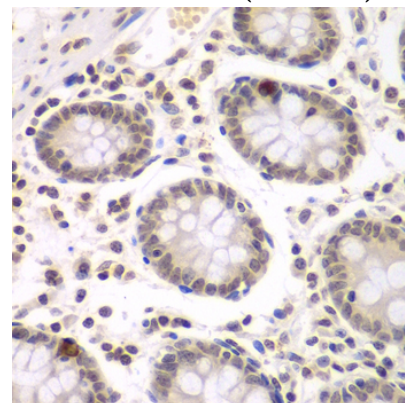
Immunohistochemistry of paraffin-embedded rat Intestine using UHRF2 antibody at dilution of



1:200 (40x lens).

Immunohistochemistry - UHRF2 Polyclonal Antibody

Immunohistochemistry of paraffin-embedded human liver cancer using UHRF2 antibody at dilution of 1:200 (40x lens).



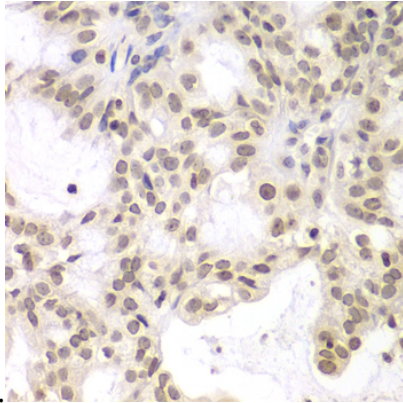
Immunohistochemistry - UHRF2 Polyclonal Antibody

UHRF2 Polyclonal Antibody



Catalog Number: 161710

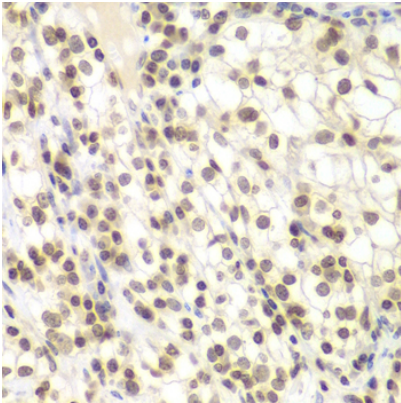
Immunohistochemistry of paraffin-embedded human colon using UHRF2 antibody at dilution of



1:200 (40x lens).

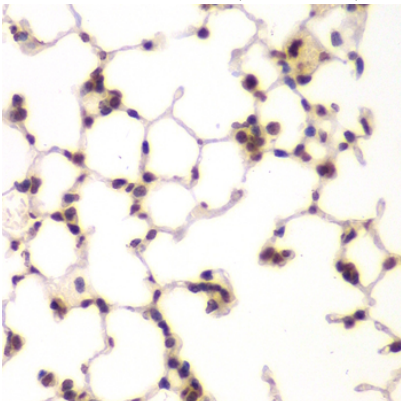
Immunohistochemistry - UHRF2 Polyclonal Antibody

Immunohistochemistry of paraffin-embedded human oophoroma using UHRF2 antibody at dilution of 1:200 (40x lens).



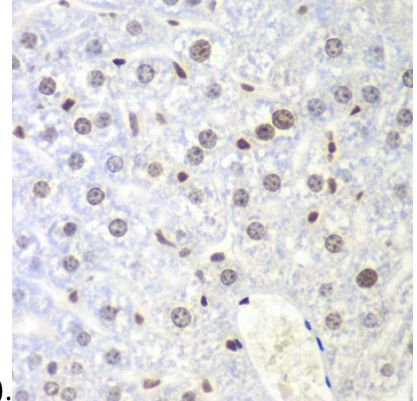
Immunohistochemistry - UHRF2 Polyclonal Antibody

Immunohistochemistry of paraffin-embedded human kidney cancer using UHRF2 antibody at dilution of 1:200 (40x lens).



Immunohistochemistry - UHRF2 Polyclonal Antibody

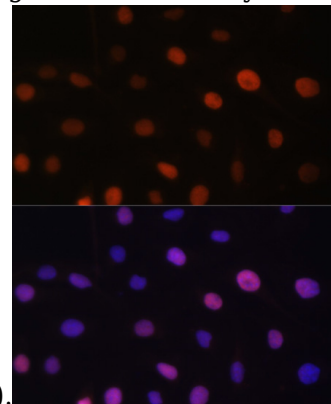
Immunohistochemistry of paraffin-embedded mouse lung using UHRF2 antibody at dilution of



1:200 (40x lens).

Immunohistochemistry - UHRF2 Polyclonal Antibody

Immunohistochemistry of paraffin-embedded mouse liver using UHRF2 antibody at dilution of



1:200 (40x lens).

Immunofluorescence - UHRF2 Polyclonal Antibody

Immunofluorescence analysis of U-2 OS cells using UHRF2 antibody at dilution of 1:100. Blue: DAPI for nuclear staining.